

frog

SELF ETCHING ADHESIVE SYSTEM

SELBSTÄTZENDES ADHÄSIVSYSTEM

SISTEMA ADESIVO AUTO-CONDICIONANTE

SISTEMA ADHESIVO AUTOGRABANTE

ADHÉSIF AUTO-MORDANÇANT

SISTEMA ADESIVO AUTOMORDENZANTE

ZELF ETSEND ADHESIEF SYSTEEM

SELVÆTSENDE ADHESIVT SYSTEM

SELVETSENDE ADHESIVT SYSTEM

ITSE-ETSAAVA SIDOSAINE

SAMOWYTRAWIAJĄCY SYSTEM WIAŻĄCY

ÖNSAVAZÓ BOND RENDSZER

ISESÖÖVITAV ADHESIIVSÜSTEEM

SAMOJEDKAJOČ, SAMOADHEZIVEN SISTEM

PAŠKODINOŠĀ ADHEZĪVĀ SISTĒMA

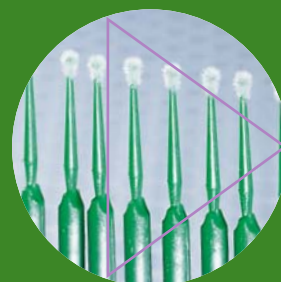
SAVAIME ĒSDINANTI SURĪŠIMO SISTEMA

SAMOLEPTACÍ ADHEZIVNÍ SYSTÉM

SAMOLEPTACÍ, ADHEZĪVNY SYSTÉM

自酸蚀粘结系统

齒科用象牙質接着材 セルフエッチングタイプ光重合型



SDI

frog² noun, a thing used to hold or fasten something

(Compact Oxford English Dictionary)

frog

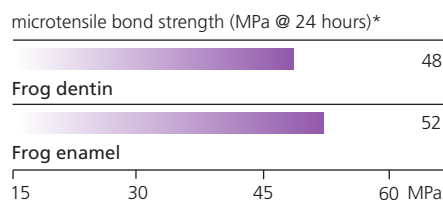


Self etcher

Frog self-etching primer infiltrates cut tooth surfaces, effectively dissolving the smear layer formed during cavity preparation. Frog users do not require a separate etching step. Instead, the dentinal tubules are simultaneously plugged as they are etched.

The gripper

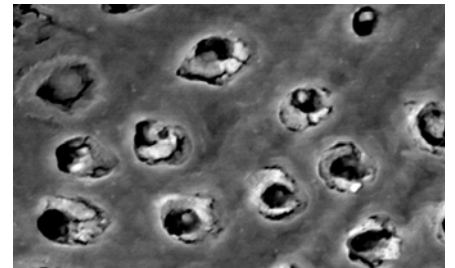
Frog deeply penetrates to form a very strong bond enabling a perfect grip to the tooth surface. Frog maintains the hydroxyapatite in the collagen fibrils assisting in mechanically bonding the adhesive to the tooth surface.



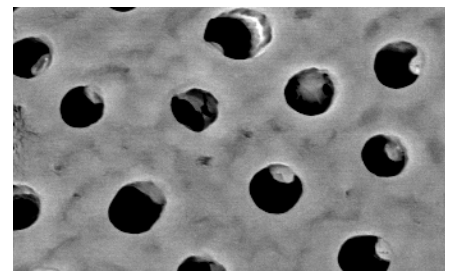
Protecting the pulp

Post-operative sensitivity is prevented: no separate etching, washing and / or drying required, hence over drying cannot occur. Patient comfort is maximized.

Frog Primer (SEM Magn 10,000x)



Phosphoric acid etch (SEM Magn 10,000x)



Nano nano nano!

Frog's specially treated nanofillers improve the cohesive strength of the bond and ensure good adaptation to tooth structure when applied to both dentin and enamel. There will be complete marginal sealing to protect the restoration margins against the diffusion of oral fluids and microorganisms. No shaking of the bottle is required.

Proprietary monomers

Frog's monomers are special. They ensure no degradation of the adhesive over time, increase cohesive strength of the bond and are excellent for etching, priming and durability.

Low film thickness

Frog's low film thickness of 12 microns ensures invisible margins.

Optimal pH

Frog's optimal pH of 2.0 allows the unblocking of the dentin tubules without aggressively decalcifying the tooth surface.

Quick and simple

Frog's simple procedure saves chair time. There is no separate acid-etching step nor is there any mixing required. Frog is an excellent choice for pediatric dentistry.

Absolute cure

Frog contains a coloured dye indicator that turns clear after light curing. Besides being easy to see, a complete cure is assured when the colour disappears.

Any light

Containing camphorquinone, Frog will cure with any type of dental light. Frog is just waiting to be zapped!

Indications

- bonding of direct resin based restorations
- bonding of indirect restorations with indicated resin cement
- bonding composite to old amalgam
- orthodontic brackets**etching required
- repairing composite, porcelain and hybrid ceramic restorations
- sealing exposed root surfaces causing hypersensitivity
- cavity sealing prior to placement of indirect restorations
- treatment of hypersensitivity
- desensitising cervical areas
- crown preparations

Prime



Blow



Bond



Blow



Light cure



Completed restoration

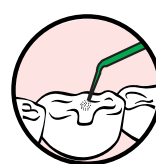


Photos courtesy of Dr. Geoff Knight

instructions: for direct resin restorations

Clean and isolate tooth. Remove excess water.

- 1 Apply Frog Primer to saturate all internal surfaces. Leave in place for 20 seconds



- 2 Blow gently with dry, oil free air. Leave surface glossy



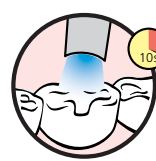
- 3 Apply Frog Bond to the primed surface



- 4 Blow gently with dry, oil free air to ensure uniform layer



- 5 Light cure for 10 seconds



- 6 Apply composite according to the manufacturer's instructions

frog



Frog Bottle Introductory Kit

- 1 x Frog Primer 5mL bottle
 - 1 x Frog Bond 5mL bottle
 - 40 x Points disposable brush applicators
 - 2 x Mixing wells
- Reorder 8100300

Frog Primer 5mL Bottle Refill

Reorder 8100302

Frog Bond 5mL Bottle Refill

Reorder 8100303

* SDI Test Data



Made in Australia by SDI Limited
Bayswater, Victoria 3153
Australia 1 800 337 003
Austria 00800 022 55 734
Brazil 0800 770 1735
France 00800 022 55 734
Germany 0800 100 5759
Ireland 01 886 9577
Italy 800 780625
New Zealand 0800 734 034
Spain 00800 022 55 734
United Kingdom 00800 022 55 734
USA & Canada 1 800 228 5166
www.sdi.com.au

