



STAE

DENTIN / ENAMEL SINGLE
COMPONENT ADHESIVE



SINGLE COMPONENT TOTAL ETCH ADHESIVE

Stae is a fluoride releasing single component dentine/ enamel total etch adhesive system, designed for direct bonding. Stae completely and homogeneously infiltrates the hybrid layer to ensure superior bonding to the tooth.

ONE BOTTLE SYSTEM

Stae combines both primer and adhesive in one bottle to simplify the technique and decrease patient chair time.

FLUORIDE RELEASE

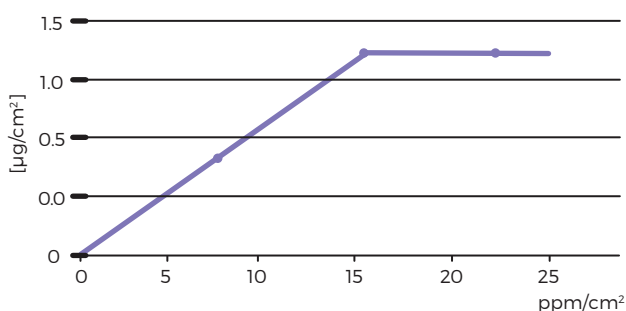
Fluoride's cariostatic effect enhances remineralisation and inhibits enamel demineralisation. In an aqueous environment, the fluoride ions in Stae diffuse from the resin into the surrounding tooth. This ionic movement is caused by oral fluid passing in and out of the resin and tooth, acting as a carrier for the fluoride ions.

NON BIS-PHENOL A

Stae avoids the Bis-phenol A hormonal imbalance controversy, as it does not contain the related BisGMA resin.



CUMULATIVE FLUORIDE RELEASE **



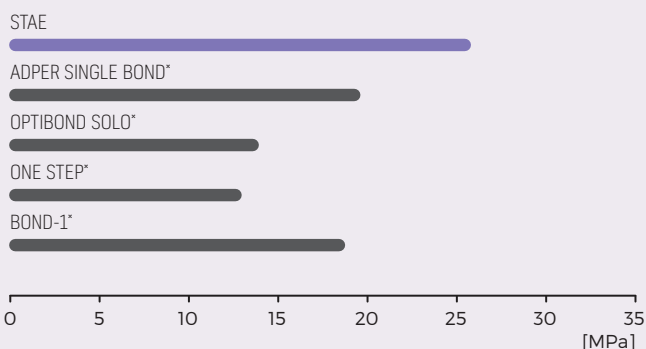
BONDS TO MOIST AND DRY TOOTH SURFACES

Stae's carrier solvent is a mixture of acetone and water. The acetone carries Stae deep into the demineralised dentine and the water re-moistens any dry dentine.

HIGH BOND STRENGTH

Stae's complete hybridisation of the resin into the demineralised dentine results in high bond strength.

BOND STRENGTH [2]**



COMPLETE AND CONSISTENT HYBRIDISATION

"SEM observations of the Stae adhesive system revealed hybridisation at the dentine-resin interface. The hybrid layer appears well developed with a uniform thickness of around 3 to 4 microns."^[2] Stae's well infiltrated hybrid layer, compared to the other brands below, illustrates Stae's complete sealing of the dentinal tubules, minimising post operative sensitivity. Evident in the photographs is Stae's "intimate adaptation of the interdiffused resin to the remaining sound tooth structure and uniform image density.

There are no gaps or voids visible within the hybrid layer. Such a characterisation has previously been associated with adhesive systems with durable clinical success. A similar result was found with 3M Single Bond* adhesive system.

With the Optibond Solo* adhesive, a less well defined hybrid layer resulted. Within the layer are areas void of resin interdiffusion. Further, the non-uniform image density suggests a lack of complete hybrid layer development."^[3]

ADVANTAGES

High bond strength

Fluoride releasing

No Bis-Phenol A or it's derivatives

Easy to use - bonds to moist and dry tooth surfaces

Complete and consistent hybridisation

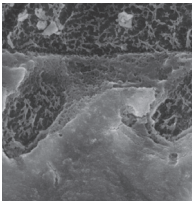
INDICATIONS

All direct restorative composites

Compomers

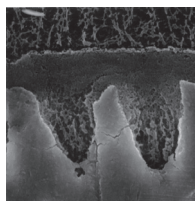
Composite / Ceramic* / Metal* / Porcelain* Repairs

STAE



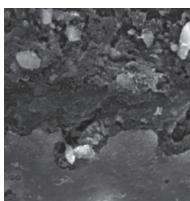
Magn 5,000x

ADPER SINGLE BOND*



Magn 5,000x

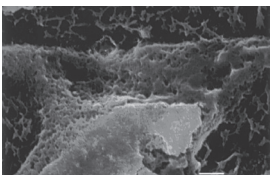
OPTIBOND SOLO*



Magn 5,000x

NO VOIDS

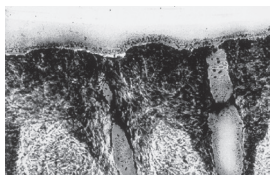
Stae's "hybrid layer is continuous with the residual dentine layer with no evidence of separation or voids."^[2]



SEM Magn 2,000x

COMPLETE SEAL

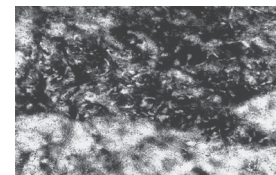
Stae's "hybrid layer is very uniform with no variation in staining which represents a uniform interdiffusion of adhesive resin into the demineralised layer. The collagen framework appears totally encapsulated with resin."^[2]



TEM Magn 2,000x

INTACT COLLAGEN

"Collagen fibrils within the hybrid layer show evidence of complete banding with no signs of denaturing or loss of structural integrity."^[2]




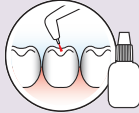





SEM Magn 10,000x

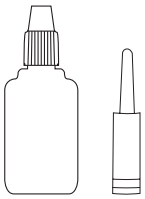
Dental Advisor Rating

» Stae is a highly recommended adhesive system designed for composite, compomer, and porcelain bonding. It received an 86% rating.^[1] «

INSTRUCTIONS

- 1** Etch tooth surface with Super Etch 37% phosphoric acid for 20 seconds

- 2** Wash thoroughly

- 3** Remove excess water. Keep moist

- 4** Apply Stae to saturate all internal surfaces.

- 5** Blow gently with dry, oil-free air for 2 seconds to evaporate solvent. Leave surface glossy

- 6** Light cure for 10 seconds

- 7** Apply composite or compomer, such as Aura, Aura Easy or Aura Bulk Fill, according to the manufacturer's instructions


ORDER DETAILS



STAE

Stae Bottle refill
1 x 5mL Stae bottle

8100201

* Apter Single Bond, Optibond Solo, One Step and Bond-1 are not registered trademarks of SDI Limited.

** Source-Published and SDI test data.

^ Bonding surface requires pre-treatment with a silane primer.

[1] The Dental Advisor, September 1998, Vol 15, No 7.

[2] Duke E. S., DDS, MSD, [1997]. Ultrastructural and physical property studies of Stae single component adhesive system. The University of Texas Health Science Center, San Antonio, USA.

[3] Duke E. S., DDS, MSD, [1997]. Research Report, The University of Texas Health Science Center at San Antonio.



YOUR SMILE. OUR VISION.

CE
0297

01-2023

M810201 J



+D036M8102011-

MADE IN AUSTRALIA
by SDI Limited
Bayswater, Victoria 3153
Australia
www.sdi.com.au

AUSTRALIA 1800 337 003
AUSTRIA 00800 0225 5734
BRAZIL 0800 770 1735
FRANCE 00800 0225 5734
GERMANY 0800 100 5759

ITALY 00800 0225 5734
NEW ZEALAND 0800 808 855
SPAIN 00800 0225 5734
UNITED KINGDOM 00800 0225 5734
USA & CANADA 1 800 228 5166