

6 PREVIOUS EVALS | 42 YEARS EXPERIENCE

Luna Flow is the correct consistency to make placement easier and more comfortable.

Edward Penza, DDS
West Palm Beach, FL



0 PREVIOUS EVALS | 14 YEARS EXPERIENCE

Luna 2 is a winner for esthetics and strength. The finishing characteristics are pleasantly surprising.

Scott Waletzko, DDS
Oak Harbor, WA



6 PREVIOUS EVALS | 27 YEARS EXPERIENCE

This composite holds its own when compared to industry giants.

Bennie Clark, DMD
Jacksonville, FL

SDI

Luna 2, Luna Flow & Zipbond

4.2
Dental PRODUCT SHOPPER
RECOMMENDED PRODUCT

This versatile restorative system combines ideal handling properties with superior strength and esthetics to create beautiful, durable final restorations

Sorting through the wide range of composite materials on the market is easier said than done. With flowable, bulk-fill, and universal composites, it can be overwhelming for dental practices to keep them all straight, which often leaves dentists searching for a versatile restorative solution that simplifies the selection process.

Hoping for "a versatile, high quality composite material [that is] suitable for a variety of composite restorations," Dr. Stephen Rosenberg was excited to try SDI's trio of restorative materials—Luna 2 universal composite, Luna Flow flowable composite, and Zipbond universal adhesive—for this DPS evaluation. He determined that it's "a versatile system [that's] simple yet flexible enough to suit a wide variety of clinical uses." Explaining that Luna 2, Luna Flow, and Zipbond "produce very nice-looking restorations," Dr. Rosenberg is thrilled to have "a coordinated composite restorative that is useful in a wide variety of situations, is versatile but not over complicated, performs very well, and integrated into my practice easily."

Ease of Use & Convenience of All-in-One System

Suitable for anterior and posterior restorations, Luna 2 universal composite features ideal handling properties, low shrinkage, beautiful esthetics, and high strength, while Luna Flow is a strong, flowable, light-cured material that's delivered directly into the cavity prep. Zipbond is a fluoride-releasing, light-cured universal adhesive with predictable bond strengths to multiple substrates with all etching techniques.

When using Luna 2, Luna Flow, and Zipbond, Dr. Eric Levine liked having "a system of composites and

adhesives where it's easy to identify what will be used with what." Calling Luna 2 "quick and easy to dispense, apply, and sculpt," Dr. Gary Johnson said, "The 2 viscosities of Luna Flow provide great options as a liner, pit and fissure sealant, or for composite repair." Dr. Donald Jetter said Zipbond's unit-dose bottles "save chair time," and Dr. Scott Turik stated, "Zipbond works as well as, if not better than," his current brand name adhesive. Using Luna Flow and Luna 2 to restore 2 chipped lower incisors, Dr. Rosenberg said, "The procedure was straightforward and resulted in highly esthetic restorations through simple technique."

Handling

A unique blend of proprietary fillers optimizes handling, offers high radiopacity, and features reliable mechanical properties for Luna 2 and Luna Flow. "Luna Flow is the correct consistency to make placement easier and more comfortable," noted Dr. Edward Penza, while a few dentists thought it was too runny. Dr. Rosenberg called Luna 2 "an excellent balance of handling properties that handles and sculpts very well," and Dr. Johnson said, "Both composites have



takeaways

- Luna 2, Luna Flow, and Zipbond are a versatile restorative solution for many different indications
- Luna 2 & Luna Flow offer superior strength, esthetics and high radiopacity
- Proprietary fillers improve handling properties
- Logical Shade Matching Technology and a chameleon effect enable easy and accurate shade matching
- Zipbond provides consistent adhesion and bond strength to multiple substrates



Stephen Rosenberg, DMD
Boca Raton, FL

"It is a versatile system [that's] simple yet flexible enough to suit a wide variety of clinical uses."

wonderful handling characteristics." Appreciating the "good adaptability to cavity preparations," Dr. Scott Waletzko said the "handling characteristics (lack of stickiness, ability to shape) are a valuable, stress-relieving addition to my clinical tool kit."

Versatility, Esthetics & Final Results

Available in 12 shades, Luna 2 and Luna Flow feature Logical Shade Matching Technology and a chameleon effect with optimal translucency, color stability, and high polishability. With high strength and wear resistance, both composites are ideal for a variety of restorative indications, and Zipbond delivers a consistent reliable bond.

"I loved the wide assortment of shades," described Dr. Eric Leibowitz, and Dr. Bennie Clark praised the "excellent handling and color matching," of the composites, which "should be considered top-shelf" and "performed at high levels in the posterior when doing multiple restorations." Hoping for a posterior composite that handled and polished well, Dr. Scott Miller said Luna 2 "really came through on both counts."

"The combined use of Luna Flow, Luna 2, and ZipBond provides a marvelous sandwich technique composite restoration," said Dr. Johnson, who praised the chameleon effect and polishing characteristics. Dr. Waletzko called Luna 2 "a winner for esthetics and strength with finishing characteristics [that] were pleasantly surprising

with a good shine and smoothness." Luna 2 provided "life-like restorations" for Dr. Robert Klein's patients, with "great results in both posterior and anterior restorations."

Overall Satisfaction

"ZipBond, Luna 2, and Luna Flow provide an easy-to-use family of similar chemistry restoratives to use in a wide spectrum of cosmetic restorations," concluded Dr. John-

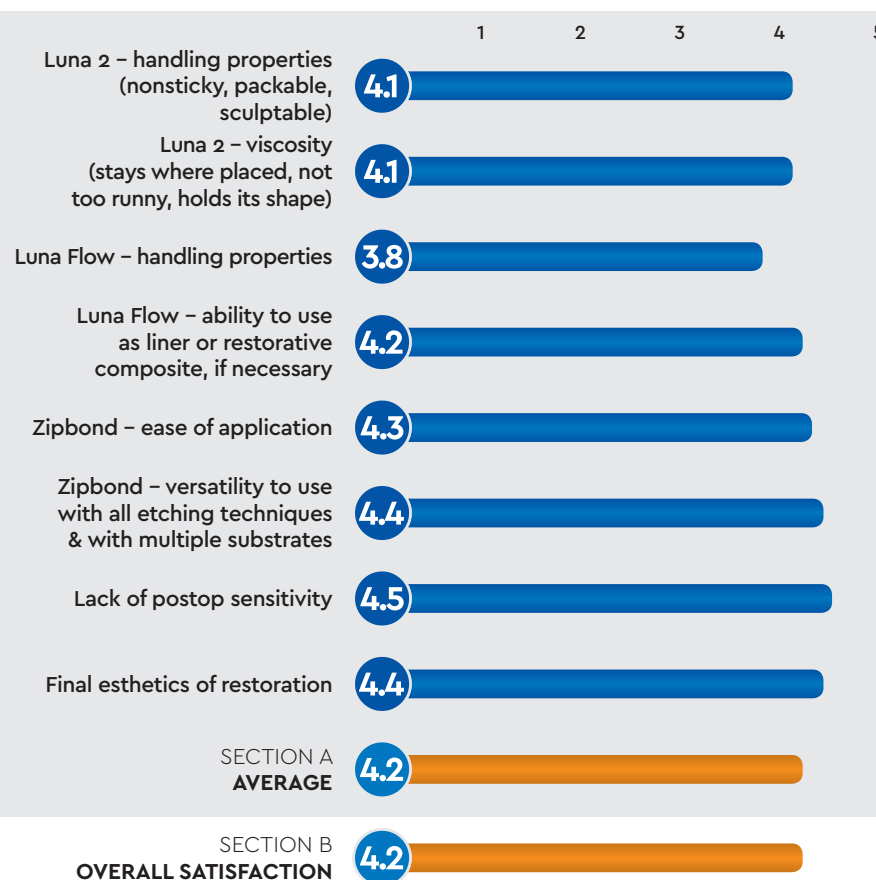
son. Noting that he would "highly recommend" these products, Dr. Clark decided, "This composite holds its own when compared to industry giants," and Dr. Waletzko said, "When a product reduces my stress level, I can't help but feel enthusiastic!"

FOR MORE INFORMATION:

800.228.5166
www.sdi.com.au

PRODUCT REVIEW SNAPSHOT

CRITERIA BASED ON AVERAGE SCORE (OUT OF 5)



SDI
LUNA 2, LUNA FLOW & ZIPBOND

FINAL SCORE
AVERAGE OF SECTIONS A AND B

4.2

