



# PRODUCTS

MORE THAN 50 YEARS OF RESTORATIVE INNOVATION



Royal Flying Doctor Service

SOUTH AUSTRALIA & NORTHERN TERRITORY

# P O L A



ADVANCED TOOTH WHITENING SYSTEM



## RIVA GLASS IONOMERS



## COMPOSITES



## CEMENTS



# COMPOSITES

## STELA

### SELF CURE RESTORATIVE

- Self cure flowable composite
- Mitigates polymerisation stress for a gap-free interface
- Self cure for unlimited depth of cure
- High bond strength
- Choice of capsule or automix syringe
- High flexural strength
- High compressive strength & high surface hardness



Cavity prepared and ready to be isolated with rubber dam



Final aspect after finishing and polishing

Images courtesy of Prof Dr Rocio Lazo



## LUNA 2

### UNIVERSAL COMPOSITE

#### High strength & aesthetics

- Fantastic handling: non-stick, non-slump, easy to pack and sculpt
- BPA free for health conscious patients
- Vita-shaded with Logical Shade Matching Technology and chameleon effect for easier and consistent shade selection, with great colour stability
- High 250% Al radiopacity that allows clear differentiation with adjacent enamel and dentine, providing easy and precise diagnosis in radiographs



## AURA EASY

### UNIVERSAL COMPOSITE

- 4 shades cover 16 VITA® classical A1-D4® shades
- Increased wear resistance and strength
- Smooth high gloss finish every time
- Non-sticky consistency makes it simple to sculpt
- Low volumetric shrinkage to offset marginal stress



## AURA BULK FILL

### UNIVERSAL BULK FILL COMPOSITE

- High compressive & wear strength – no need for capping layer
- 5mm depth of cure
- Excellent aesthetics due to novel curing feature & chameleon effect
- Low shrinkage
- Quick & easy to place without sticking or slumping



# FLOWABLE COMPOSITES



## LUNA FLOW

### UNIVERSAL FLOWABLE COMPOSITE

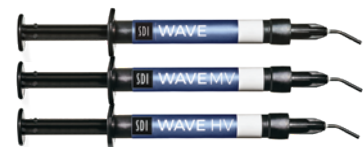
- Exceptionally high compressive strength of 421 MPa and 128 MPa of flexural strength
- Flows on demand, holds its shape and does not string for maximum control over application
- Outstanding radiopacity of 265% Al for faster and more precise diagnosis
- Two viscosity options for all clinical indications: Luna Flow offers medium/high viscosity and Luna Flow LV offers low viscosity



## AURA EASYFLOW

### UNIVERSAL FLOWABLE COMPOSITE

- 4 shades cover 16 VITA® classical A1-D4® shades
- Optimal flow for cavity adaptation
- High visibility on radiographs
- Easy shade matching
- Optimised optical properties
- Stable aesthetics over time



## WAVE, WAVE MV AND WAVE HV

### FLOURIDE RELEASING FLOWABLE COMPOSITE

- High compressive strength
- Three viscosities
- Natural fluorescence
- No after cure shade change

# CEMENTS

## SUPERIOR BOND, HIGH STRENGTH AND LESS WASTE

Riva Cem Automix is a self-curing, radiopaque, fluoride releasing paste/paste resin modified glass-ionomer luting cement. It is indicated for the permanent cementation of metal and ceramic restorations. The automix tip attachment offers convenience over traditional hand mixed cement systems.

### RIVA CEM AUTOMIX

RESIN MODIFIED GLASS IONOMER LUTING CEMENT

- Superior bond, high strength & less waste
- Highest flexural strength
- More tips / less tip waste
- The best long term aesthetics
- Light tack cure option
- Sustained fluoride release
- BPA free
- Shade: light yellow



### RIVA LUTING PLUS

SELF CURING RESIN MODIFIED GLASS IONOMER LUTING CEMENT

- Chemically adheres to tooth and substrates
- Bioactive proprietary ionglass™ technology
- High flexural strength - reduced cracking and failure in flexion
- Fluoride releasing and recharging ability
- Radiopaque
- BPA free



### RIVA LUTING

SELF CURING CONVENTIONAL GLASS IONOMER LUTING CEMENT

- Chemically adheres to tooth structure and metal substrates
- Very low film thickness - flows easily between restoration and tooth
- High fluoride releasing and recharging ability
- Bioactive proprietary ionglass™ technology
- BPA & HEMA free



### SET PP

DUAL CURED, SELF ETCHING, SELF ADHERING RESIN CEMENT

- No Bis-Phenol A or HEMA
- High bond strength
- Easy clean up
- 7g syringe refills and kits



# DESENSITISERS

## NEXT GENERATION SDF: RIVA STAR AQUA

SDI continues to innovate SDF solutions by releasing Riva Star Aqua. Riva Star Aqua is a next generation water based silver fluoride solution system used to desensitise tooth pain immediately.



### RIVA STAR AQUA

THE NEXT GENERATION SDF SYSTEM

- Clinical match to SDF
- Immediate sensitivity relief
- Assists in the elimination of biofilm
- Two years desensitising effect
- No soft tissue irritation
- No ammonia taste or smell
- Non-invasive - suitable for MID



### RIVA STAR

SILVER DIAMINE FLUORIDE AND POTASSIUM IODIDE TOOTH DENSITISING AGENT

- Contains SDF
- Immediate sensitivity relief
- Assists in the elimination of biofilm
- Two years desensitising effect
- Non-invasive - suitable for MID

# EQUIPMENT

## RADII XPERT

SMARTER DESIGN, OPTIMAL CURE EVERY TIME.

- Optimally collimated beam ideal for bulk-fill materials
- Consistent light intensity and beam profile over clinically relevant distances from 0-10mm
- Heat sink and pulse technology for enhanced heat management
- Unique target assist for precision curing
- Modular design - Full arch bleaching, diagnostic and orthodontic interchangeable attachments available
- 360-degree rotatable head
- Ergonomically well-balanced grip
- Cures all composites - light intensity 1500 mW/cm<sup>2</sup> over a 4-mm aperture with wavelength range of 440 nm - 480 nm
- Base with intensity indicator
- Lightweight with slimline design



## RADII-CAL CX

COLLIMATED LED CURING LIGHT

- Collimated beam: For a deeper, consistent cure.
- Consistent cure energy: Curing output energy remains the same during low battery usage.
- Long life battery: 1,200 x 10 second cures on a full charge.
- Advanced heat sink technology - no fan required
- Built in ramp up mode
- Built in radiometer indicator
- Cordless, lightweight design - 5.1 oz/144 g
- 2-year limited warranty\*

\*Radii-Cal CX: 2 year manufacturing warranty on parts and battery.



## ULTRAMAT 2

HIGH SPEED MULTI-USE TRITURATOR

- 5-year limited warranty
- Low vibration and extremely quiet
- Accurate and consistent trituration
- Safe and simple to use
- Easy to clean
- Dual voltage



## RADIOMETER X

MONITOR FOR CURING LIGHT INTEGRITY

- Measures the intensity of curing lights between 400 and 525 nanometers
- Immediate digital reading



# AMALGAMS



## GS-80

ECONOMICAL NON-GAMMA 2 ADMIX ALLOY

- High early compressive strength
- Great corrosion resistance
- Excellent marginal sealing
- Optimal handling characteristics
- Dimensional stability
- Over 400 Million restorations worldwide



## PERMITE

HIGH SILVER NON-GAMMA 2 ADMIX ALLOY

- Superior handling characteristics
- Void-free restorations with no marginal leakage
- Extremely high resistance to corrosion
- Mechanical and chemical stability
- High strength and hardness for extreme wear resistance
- Outstanding Market performance for over forty years



## LOJIC+

PLATINUM MODIFIED, HIGH SILVER, HIGH STRENGTH, SPHERICAL AMALGAM

- Creamy consistency, soft packing and smooth carving.
- Very high compressive strength
- Superior marginal adaptation.
- Easy to polish to a mirror finish
- Endurable, corrosion resistant amalgam
- 300 Million restorations worldwide.

# ADHESIVES

## ZIPBOND UNIVERSAL

UNIVERSAL ADHESIVE

- Consistent bond strengths to dentine and enamel
- Including MDP
- Wet and dry dentine bonding
- Predictable bond strengths to indirect substrates
- Fluoride releasing



## STAE

DENTINE/ENAMEL SINGLE COMPONENT ADHESIVE

- High bond strength
- No BPA or its derivatives
- Easy to use - bonds to moist and dry tooth surfaces



## RIVA BOND LC

LIGHT CURED ADHESIVE FOR DIRECT RESTORATION

- Unique Stress Reduction Technology™
- Compensates and absorbs composite shrinkage stress



# SEALANTS

## CONSEAL F

LIGHT CURED FLUORIDE RELEASING RESIN PIT AND FISSURE SEALANT

- No BPA or its derivatives
- Accurate and controlled delivery with 27 gauge tips
- Extremely low viscosity - quickly and deeply penetrate pits and fissures



## RIVA PROTECT

SELF CURING GLASS IONOMER USED AS A SEALANT, LINER AND SURFACE PROTECTOR

- ACP nano technology - super charges remineralisation
- Works in a moist environment - indicated for partially erupted teeth and challenging patients
- Available in pink and white shades



# ACCESSORIES

## SUPER ETCH

37% PHOSPHORIC ACID GEL ETCH

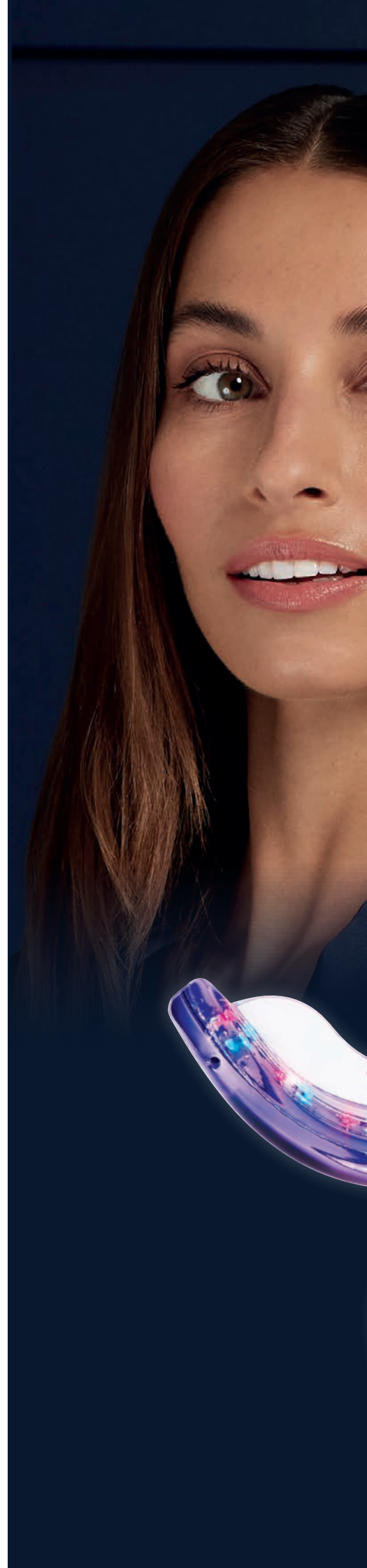
- Washes away easily with water
- No interference with adhesive
- Blue tint for easy placement visibility
- Thixotropic gel to improve handling



## POINTS & DISPENSER

DISPOSABLE BRUSH APPLICATORS

- Solvent resistant, non-absorbent, non-linting fibers
- Boxes of 400 in medium, fine and superfine Dispenser:
- Simple turn dispensing



# TOOTH WHITENING

## POLA DAY

HYDROGEN PEROXIDE BASED ADVANCED TRAY TOOTH WHITENING SYSTEM

- Available in **6%, 7.5%** and **9.5% hydrogen peroxide**
- High water content
- From 30 minutes once a day
- Contains fluoride



## POLA NIGHT

CARBAMIDE PEROXIDE BASED ADVANCED TRAY TOOTH WHITENING SYSTEM

- Available in **10%, 16%, 18%** and **22% carbamide peroxide**
- High water content
- From 45 minutes once a day
- Contains fluoride

## POLA DAY CP

SUPER FAST TRAY TOOTH WHITENING SYSTEM

- Available in **35% carbamide peroxide**
- From just 15 minutes per day tray wear time
- Fluoride Releasing
- Neutral pH
- Desensitising additives



## POLA FOR ALIGNERS

STRAIGHTEN AND BRIGHTEN TOGETHER

- Available in **10% carbamide peroxide**
- The greatest patient comfort in a whitening kit
- Contains potassium nitrate and fluoride to reduce sensitivity for long term use

## POLA RAPID

IN-OFFICE TOOTH WHITENING SYSTEM: SUPER. FAST. WHITENING.

- Available in **38% hydrogen peroxide**
- Fast and simple: from 3 x 8 minute applications
- Non-stick gel for faster application and removal
- Enhanced blue colour for superior visibility



## POLA LIGHT

TOOTH WHITENING SYSTEM!

- Available in Pola Day **6%** and **9.5% hydrogen peroxide**
- Fast acting, delivering whiter teeth in as little as 5 days
- 2 x 10 or 2 x 15 minute treatments a day.

## POLA LUMINATE

BRUSH ON & GO!

- Available in **6% hydrogen peroxide**, low viscosity fast drying gel
- No trays required - quick and easy professional brush on tooth whitener



# GLASS IONOMERS



## THE MULTI AWARDED EASY HANDLING GLASS IONOMER

Riva Light Cure HV contains **ionglass™** filler, made of a unique blend of different sizes of ultrafine highly reactive glass particles.

The **ionglass™** filler contains fluoride and strontium ions which synergistically enhance tooth bioremineralisation.

[Source: Thuy et al. Arch Oral Biol. 2008 Nov; 53(11):1017-22]

### RIVA LIGHT CURE

LIGHT CURED, RESIN REINFORCED GLASS IONOMER RESTORATIVE MATERIAL

- Exceptional low viscosity handling
- Contains SDI's proprietary ionglass™, a high ion releasing, radiopaque, bioactive glass that remineralises and fights against secondary caries formation
- Unique, patented, orange light safe tip, prevents curing in the tip and significantly extends working time

### RIVA LIGHT CURE HV

HIGH VISCOSITY LIGHT CURED, RESIN REINFORCED GLASS IONOMER RESTORATIVE MATERIAL

- Exceptional high viscosity handling
- Contains SDI's proprietary ionglass™, a high ion releasing, radiopaque, bioactive glass that remineralises and fights against secondary caries formation
- Unique, patented, orange light safe tip, prevents curing in the tip and significantly extends working time
- High Viscosity formulation is flowable enough to inject and highly sculptable and packable



RIVA LIGHT CURE HV

## A HYBRID RESTORATIVE WITH MORE INDICATIONS



CLASS I

CLASS II  
(conservative)

CLASS V



### RIVA SELF CURE

SELF-CURING, TOOTH REMINERALISING GLASS HYBRID BULK FILL RESTORATIVE MATERIAL

- Contains SDI's proprietary ionglass™, a high ion releasing, radiopaque, bioactive glass that remineralises and prevents secondary caries formation
- Very high fluoride releasing and recharging ability
- Strong dentine replacement



### RIVA SELF CURE HV

HIGH VISCOSITY, SELF-CURING, TOOTH REMINERALISING GLASS HYBRID BULK FILL RESTORATIVE MATERIAL

- Contains SDI's proprietary ionglass™, a high ion releasing, radiopaque, bioactive glass that remineralises and prevents secondary caries formation
- High Viscosity formulation is flowable enough to inject and highly sculptable and packable
- Strong dentine replacement



### RIVA SILVER

MERCURY FREE SELF-CURING GLASS IONOMER RESTORATIVE MATERIAL

- Silver reinforced
- Ideal for abfraction lesion restorations
- Ideal for bulk filling
- High fluoride releasing and recharging ability



### RIVA APPLICATOR PRO

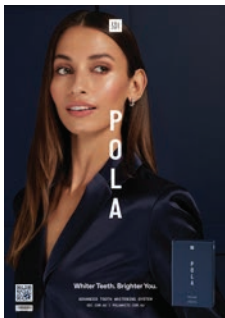
CAPSULE APPLICATOR

- Compatible with SDI and other market leading glass ionomer capsules
- Contoured design for strength and comfort
- Engineered stainless steel mechanical parts and durable mechanical casing
- No lubrication required

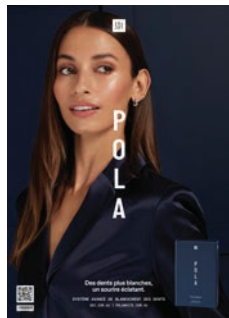


# COMPLIMENTARY MARKETING MATERIAL

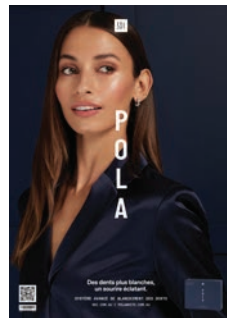
Marketing materials to assist in promoting whitening to patients.



Poster Pola Day  
Reorder M110050



Poster Pola Night  
Reorder M110051



Poster Pola Rapid  
Reorder M110092



Pola Before & After Stand  
Reorder M110057



Pola Patient Handout Stand  
Reorder M110059



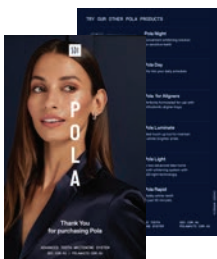
Pola Patient Handout  
Reorder M101055



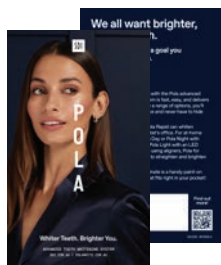
Pola Appointment Card  
Reorder M110056



Pola Window Sticker  
Reorder M110058



Pola Thank You Card  
Reorder M110063



Pola Statement Stuffer  
Reorder M110060



Pola Carry Bag  
Reorder M100332



Pola Carry Bag  
Reorder M100331



Pola Waiting Room  
USB Video  
Reorder M100245



Customisable Marketing Material  
More customisable marketing material is available via download.  
Visit [www.sdi.com.au](http://www.sdi.com.au)

VISIT [WWW.SDI.COM.AU](http://WWW.SDI.COM.AU)



YOUR SMILE. OUR VISION.

Call 1800 337 003  
fax 1800 005 602  
[info@sdi.com.au](mailto:info@sdi.com.au)

