



# AURA

ULTRA ESTHETIC  
UNIVERSAL COMPOSITE



8  
DENTINE  
SHADES

3  
ENAMEL  
SHADES

**ZERO**  
GUESSWORK

# SIMPLY ELEGANT

Aura removes the guesswork from finding the right shade for your restorations with its unique linear and scientific arrangement that brings predictability and simplicity to customizing shades.

Selecting the dentine shade plays a major role in determining the overall tooth colour (hue). Nearly all dentine falls into the red-brown-yellow hue. Aura focuses on where tooth colors vary (the 'chroma') and how strong or weak the chroma is to recreate the natural make-up and colors of the enamel and dentine.

**0.5MM LAYER OF  
AURA ENAMEL ENSURES  
OPTIMAL SHADE MATCHING**

**ENAMEL  
DETERMINES**

**5%**

OF TOOTH COLOUR

## AURA ENAMEL CHROMA

Choose the enamel shade from the incisal edge of the neighboring teeth. Aura enamel shades E1, E2 and E3 are microfilled for easy polishability to a mirror finish and a high shine and gloss that is retained indefinitely.



**E1**

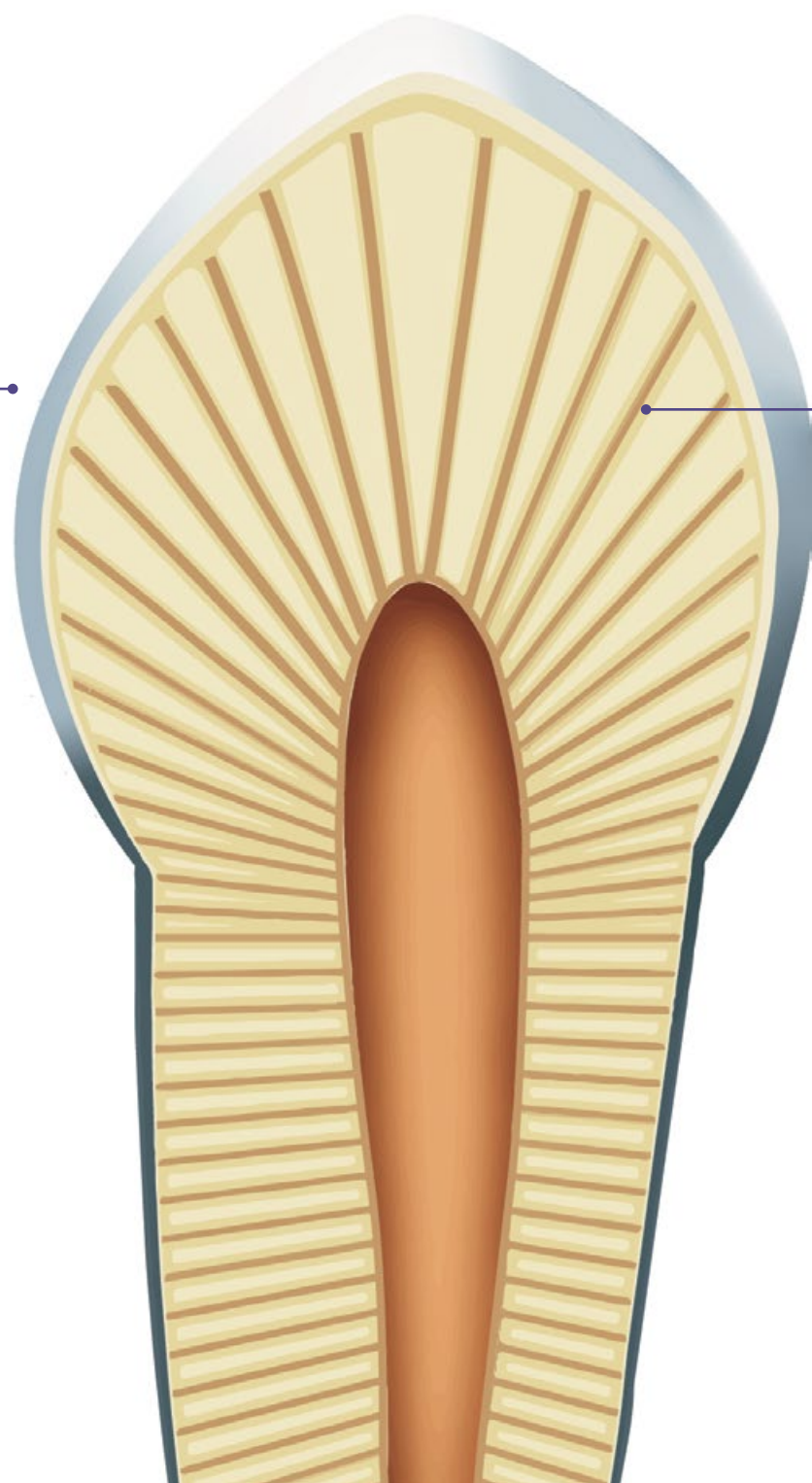
Young / bleached teeth (Most whitest / lightest, high opalescence, low translucency, designed to emulate young enamel)

**E2**

Adult teeth (Neutral in colour, low opalescence, intermediate translucency, designed to replace adult enamel)

**E3**

Senior teeth (Yellow/grey, high translucency, aged enamel)



# ELIMINATE THE GUESSWORK

Dentine and enamel, with Aura ultra universal restorative system, is the easy solution to creating as close to natural anterior and posterior restorations.

Based on the natural make-up and colors of the dentine and enamel, Aura uses a logical yet innovative approach to shade-matching and layering in one single composite system. Its unique blend of filler and resin work in harmony to deliver the strength and aesthetics needed to provide long-lasting and life-like restorations with ease.

**DENTINE  
DETERMINES**  
**95%**  
OF TOOTH COLOUR

## AURA DENTINE CHROMA

Match the shade to the dentine and the gingival/cervical region using the large chroma scale Db, DC1, DC2, DC3, DC4, DC5, DC6 and DC7. Aura dentine shades are nano-hybrid composites based on a single opacity and single hue that is fluorescent. Its excellent handling properties allow busy clinicians to contour and shape without slumping or sticking to instruments, making it possible to achieve beautiful restorations quickly and easily - first time, every time!



**AURA DENTINE CHROMA**  
**VITA® EQUIVALENT**

**INCREASED WEAR RESISTANCE AND STRENGTH**

**SMOOTH HIGH GLOSS FINISH EVERY TIME**

**NON-STICKY CONSISTENCY MAKES IT  
SIMPLE TO SCULPT**

**NO SLUMPING AND HOLDS ITS SHAPE**

**QUICK AND EASY PLACEMENT IN SECONDS**

**MINIMAL  
VOLUMETRIC  
SHRINKAGE**

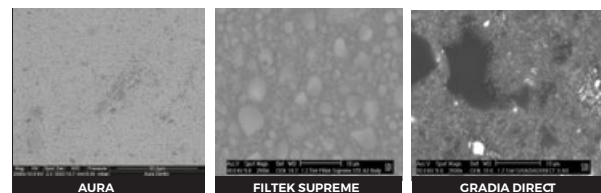
Aura combines a new low-shrinkage resin composition with a new Ultra High Density (UHD) filler.

LOW  
**2.2%\***  
**VOLUMETRIC  
SHRINKAGE**

\*SDI internal data

## EXPERIENCE THE MODERN MICROFILL

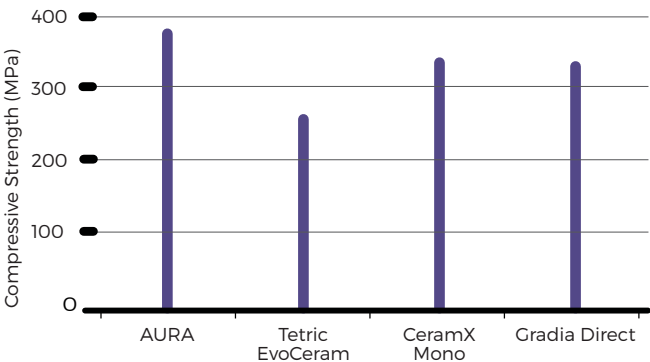
Aura combines a new low shrinkage resin composition with a unique morphology of ultra high density (UHD) filler. This provides the exceptional strength of a nano-hybrid composite that can withstand high compressive forces, coupled with an enamel shade range made from microfilled pre-polymerized particles for easy polishability and sculptability.



SEM images show the difference in size of fillers when compared with other composite materials. The smaller polymerized microparticles of Aura make it stronger than a standard microfill. This allows for fast and easy polishing to a long-lasting high gloss finish, without the "plucking effect" of large particles. Those with larger fillers are unable to achieve the same results.

# STRENGTH & STABILITY

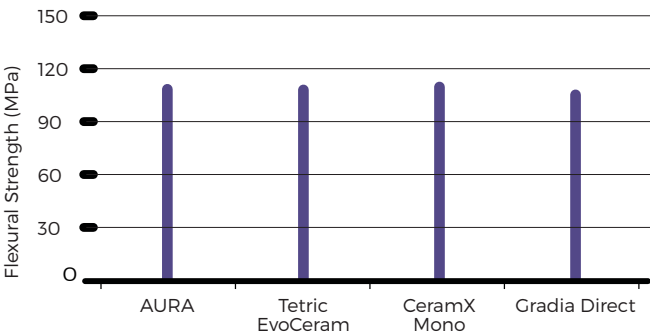
## IMPRESSIVE COMPRESSIVE STRENGTH\*



\*SDI internal data

The unique morphology of the UHD filler provides an extremely high strength interface that can withstand high compressive forces.

## HIGH FLEXURAL STRENGTH\*



\*SDI internal data

Aura's superior flexural strength means it is able to withstand forces transmitted in the mouth.

## ADVANTAGES

8 dentine shades and 3 enamel shades to reproduce the natural colors of teeth

A simple layering technique with zero guesswork

Superior strength and wear resistance

High polishability and gloss

Non-stick and easy to sculpt

Ultra High Density (UHD) filler with low-shrinkage resin

High flexural strength

## INDICATIONS

	Enamel shade	Dentine shade
Anterior restorations	▪	▪
Posterior restorations	▪	▪
Indirect inlays, onlays & veneers	▪	▪
Core build ups		▪
Splinting	▪	▪
Sandwich technique with glass ionomer		▪

\*For use as thin overlay over Dentine Chroma shade.



» The Aura system was chosen for the case due to its durability, natural selection of colours and its ability to allow underlying tooth structure to enhance the composite's appearance. «

Dr Hugh Flax DDS

# ACHIEVABLE AESTHETICS

## CASE STUDIES

### INCISAL EDGE FRACTURE

Traumatized upper lateral incisor. The tooth was repaired using DC3 to replace the dentine, followed by shade E2 enamel shade. Following etching and Stae resin application, the Aura was sculpted to recreate the incisal edge. The restoration was finished and polished to create an invisible lifelike restoration.

Dr Linda Greenwall



### AURA BONDING AFTER ORTHODONTIC ALIGNMENT

The incisal edges were bonded using Aura Composite in a segmental layering technique. Left lateral incisor tooth was shortened slightly and the central incisor edges were recreated using E1 and E2 palatally. The incisal rim had been created in the enamel, mamelons were sculpted into the teeth as the incisal edges needed to show more translucency. The incisors were sculpted into three cones to represent the lobes of the tooth using a probe and a flat plastic.

A small space was left in between so that the clear enamel was visible in between the lobes and at the incisal edge. As the teeth had been whitened, lighter shades were used. DC2, DC1 and DB bleached shade, followed by E1 enamel covering the labial surface. The form of the tooth was corrected and the incisal edge was polished.

Dr Linda Greenwall

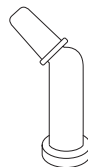
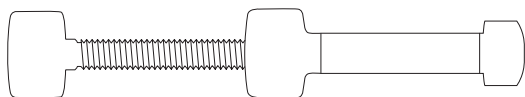


Dr Robert Katz, orthodontist, undertook the Invisalign orthodontic treatment

» I have been using Aura for 5 years. It is easy to use, durable and has excellent aesthetics. There are a variety of shades. The Aura Composite system is versatile and can be used for many bonding situations. There are great shades for bonding after tooth bleaching. «

**Dr Linda Greenwall** BDS, MGDS, RCS, MRD, RCS, MSC, FFGDP

# ORDER DETAILS



## SYRINGES

<b>Aura Master Introductory Kit - Syringes</b> 8x 4g syringe (Db, DC1, DC2, DC3, DC4, DC5, DC6, DC7), 3x 3g syringe (E1, E2, E3), 1x 4g syringe (bulk fill), 2x AURA MASTER SHADE GUIDE	8565100
Syringe Refill Db - 4g	8560011
Syringe Refill DC1 - 4g	8560004
Syringe Refill DC2 - 4g	8560005
Syringe Refill DC3 - 4g	8560006
Syringe Refill DC4 - 4g	8560007
Syringe Refill DC5 - 4g	8560008
Syringe Refill DC6 - 4g	8560009
Syringe Refill DC7 - 4g	8560010
Syringe Refill Bulk Fill - 4g	8560012
Syringe Refill E1 - 3g	8560001
Syringe Refill E2 - 3g	8560002
Syringe Refill E3 - 3g	8560003

## COMPLETS

Compleat Refill Db - 0.25g	8565011
Compleat Refill DC1 - 0.25g	8565004
Compleat Refill DC2 - 0.25g	8565005
Compleat Refill DC3 - 0.25g	8565006
Compleat Refill DC4 - 0.25g	8565007
Compleat Refill DC5 - 0.25g	8565008
Compleat Refill Bulk Fill - 0.25g	8565012
Compleat Refill E1 - 0.2g	8565001
Compleat Refill E2 - 0.2g	8565002
Compleat Refill E3 - 0.2g	8565003

## AURA PRODUCT RANGE

Aura  
Aura Easy  
Aura Bulk Fill



YOUR SMILE. OUR VISION.



08-2024

M100170 B



+D036M1001701X

MADE IN AUSTRALIA  
by SDI Limited  
Bayswater, Victoria 3153  
Australia  
[www.sdi.com.au](http://www.sdi.com.au)

**AUSTRALIA** 1800 337 003  
**AUSTRIA** 00800 0225 5734  
**BRAZIL** 0800 770 1735  
**FRANCE** 00800 0225 5734  
**GERMANY** 0800 100 5759

**ITALY** 00800 0225 5734  
**NEW ZEALAND** 0800 808 855  
**SPAIN** 00800 0225 5734  
**UNITED KINGDOM** 00800 0225 5734  
**USA & CANADA** 1 800 228 5166