

CREATED BY SDI

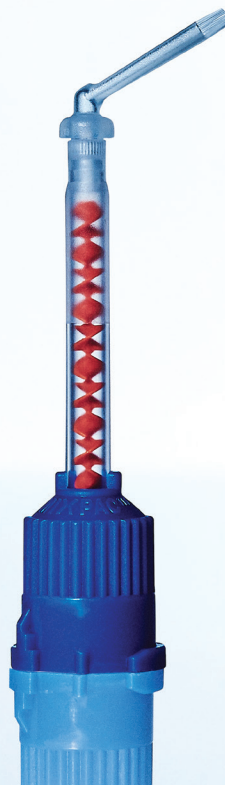
POLARAPID

ADVANCED TOOTH WHITENING SYSTEM



SUPER.
FAST.
WHITENING.

- 150% faster treatment time
- Easier application
- Built in desensitisers



150% FASTER IN-CHAIR WHITENING*



Pola Rapid is the new in office whitening treatment that safely whitens teeth in a 24 minute application time - significantly faster than other alternative whitening options.

FASTER IN-CHAIR WHITENING - APPLICATION TIME

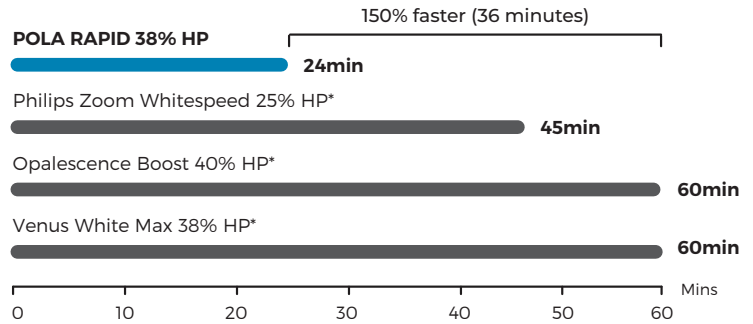


Image source: Dr Miles Cone, USA.

SUPERIOR HANDLING AND FAST REMOVAL

Pola Rapid's higher viscosity gel enables faster application and removal due to its specially formulated non-stick attributes. Pola Rapid can be extruded quickly, and easily and remains on teeth when applied.

MINIMAL CHAIR TIME WITH IMMEDIATE RESULTS

A unique 38% hydrogen peroxide formulation that releases active ingredients immediately. In only one visit, Pola Rapid initiates a powerful whitening treatment designed to whiten teeth in 24 minutes. No pre-desensitiser step is required.

SIMPLE DELIVERY AND PRECISE APPLICATION

No mixing is required. The dual barrel syringe system mixes as the gel is applied directly onto the tooth.

The supplied brush tip helps deliver a smoother and more precise application.

ENHANCED BLUE GEL FOR FASTER APPLICATION

Pola Rapid uses an advanced blue gel for ease of visibility and application. The easy to apply, non-stick gel enables faster application and removal.

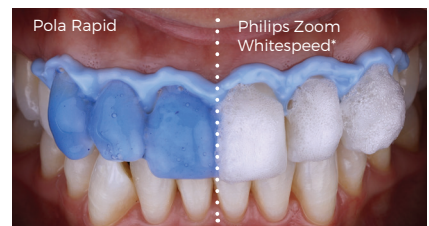
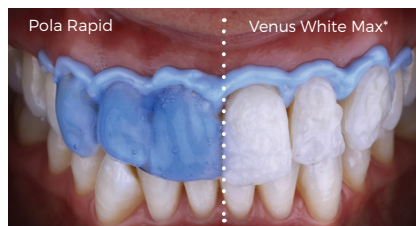
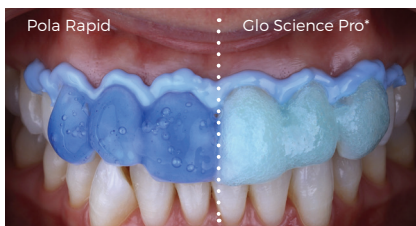


Image source: Dr Miles Cone, USA.

BUILT IN DESENSITISERS



Pola Rapid has unique built-in desensitising properties that inhibit post-operative sensitivity. Potassium nitrate, the key pain reducing ingredient, prevents sensitivity to provide a calming effect.

The high water content of Pola Rapid ensures maximum comfort during and after treatment. The shorter treatment time results in less patient discomfort and lower sensitivity.

100% of evaluators stated that patients did not experience any tooth sensitivity

Source: Data based on clinical evaluations.

FLUORIDE RELEASING TO STRENGTHEN TEETH

Pola Rapid contains fluoride, helping to strengthen teeth and protect against sensitivity.

CAN BE USED WITH OR WITHOUT A BLEACHING LIGHT

Pola Rapid can be used with or without a bleaching light, as it does not require heat to activate.

CLINICAL CASE STUDIES



Dr Sam Koh
BDS Sc Melb (Hons)
Melbourne, Australia

"I find Pola Rapid a beautiful, easy-to-use product. It is simple to apply and remove with its non-stick and enhanced blue gel formula. A great product to use by clinicians for in-chair whitening with minimal chair time and patient sensitivity, but reliable and immediate results.



Dr. Miles Cone
Fellow
American College of Prosthodontists
Diplomate
American Board of Prosthodontics
Nuance Dental Specialist
Portland, Maine, USA

Pola Rapid 38%

"Pola Rapid has exceptional colour saturation for enhanced visibility during intraoral application. The new non-stick bleaching gel stays where you apply it, and easily wipes away clean with no mess. I found the new system fast, reliable to use with minimal sensitivity for patients"



POLA RAPID STEP BY STEP GUIDE

1. Determine and record pre-operative shade using the Vita shade guide*.
2. Clean teeth with ONLY a flour-based pumice.
3. Place cheek retractors and then cover exposed lip surface with petroleum gel.
4. Dry teeth and apply Gingival Barrier to both arches, slightly overlapping enamel and interproximal spaces.
5. Light cure in a fanning motion for 10-20 seconds until Gingival Barrier is cured.
6. **Firmly** attach a mixing nozzle to the Pola Rapid syringe away from patient, and insert the plunger. Dispense a small amount of gel onto a mixing pad until a uniform blue gel is extruded.
7. Using the nozzle as a guide, directly apply a thin layer of gel to all teeth undergoing treatment. A thin layer will help prevent the gel from running.
8. Leave gel on for 8 minutes (Optional: A curing light may be used at this stage, Radii Xpert or Radii Plus (SDI Limited)).
9. Suction off using a surgical aspirator tip. Note: It is normal for a residue layer of gel to remain on the surface of the teeth.
10. Complete steps 7-9 three times (optional 4 times).
11. After the last application, suction all the gel off, then wash and apply suction.
12. Remove Gingival Barrier by lifting it from one end.
13. Record the final shade.



Image source: Dr Miles Cone, USA.



Scan QR code for step by step instructions.

*Vita shade guide is a trademark of VITA Zahnfabrik, H. Rauter GmbH & Co. KG, D-79713 Säckingen, Germany



Pola Rapid 1 Patient Kit

7700516 (with Optragate)
7700517 (no Optragate)
1 x 2.8 mL syringe of Pola Rapid
1 x 1g Gingival Barrier syringe
Accessories



Pola Rapid 3 Patient Kit

7700518 (with Optragate)
7700519 (no Optragate)
3 x 2.8 mL syringes of Pola Rapid
3 x 1g Gingival Barrier syringes
Accessories



Gingival Barrier 2 Syringe Refill

7750006
2 X 1g Gingival Barrier Syringes
Accessories



Pola Whitening Stand

7700989
1 x Stand
1 x mount for SDI Radii Plus
1 x mount for SDI Radii Xpert
(LED curing light not included)

*Data source: Manufacturer instructions for use. Not registered trademarks of SDI Limited.



INSTAGRAM
@pola_smile



FACEBOOK
pola smile

FOR MORE INFORMATION VISIT
polawhite.com.au

12-2023

M100569 E



*0036M10056912



MADE IN AUSTRALIA
by SDI Limited
3-15 Brunson Street,
Bayswater, Victoria 3153 Australia
www.sdi.com.au

AUSTRALIA 1800 337 003
AUSTRIA 00800 022 55 734
BRAZIL 0800 770 1735
FRANCE 00800 022 55 734
GERMANY 0800 100 5759

ITALY 00800 022 55 734
SPAIN 00800 022 55 734
UNITED KINGDOM 00800 022 55 734
USA & CANADA 1 800 228 5166