

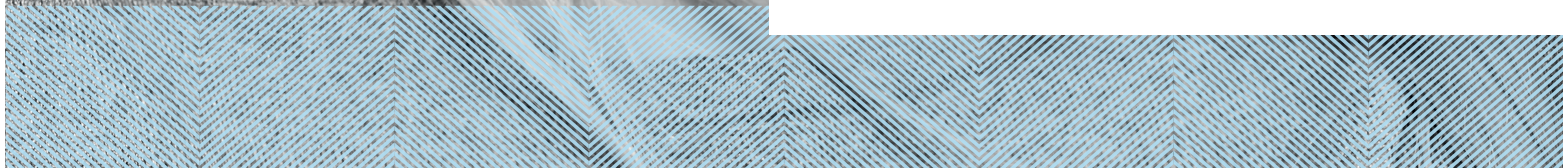


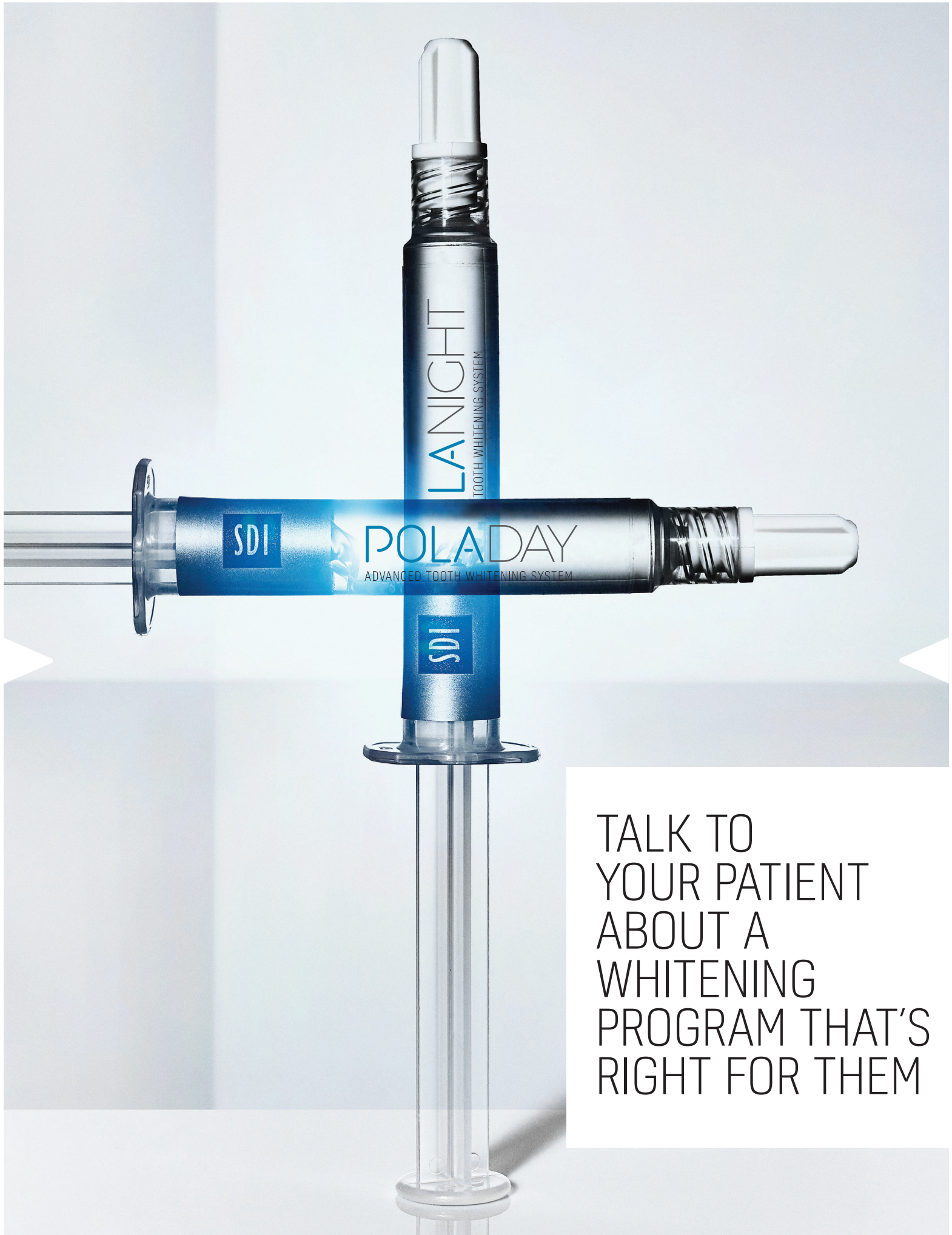
CREATED BY SDI

POLA

ADVANCED TOOTH
WHITENING SYSTEM

YOUR SMILE
CATALOG





LANIGHT
TOOTH WHITENING SYSTEM

SDI

POLADAY
ADVANCED TOOTH WHITENING SYSTEM

SDI

TALK TO
YOUR PATIENT
ABOUT A
WHITENING
PROGRAM THAT'S
RIGHT FOR THEM

IN-OFFICE TREATMENTS

Pola Rapid	38% hydrogen peroxide	3 x 8 minute application
Pola Office	35% hydrogen peroxide	3 x 8 minute application



AT HOME TREATMENTS

Pola Day

7.5% hydrogen peroxide	1 or 2 x 30 minute applications or 1 x 45 minute application per day
9.5% hydrogen peroxide	2 x 15 minute applications or 1 x 30 minute application per day

Pola Night

Note: 1% of hydrogen peroxide equates to
3% of carbamide peroxide

10% carbamide peroxide	1 x 2 hours to overnight
16% carbamide peroxide	90 minutes per day to overnight
22% carbamide peroxide	1 x 45 minutes per day

Pola Day CP

35% carbamide peroxide	15 minutes wear time at home or 30 minutes for jump start in dental office
------------------------	---

Pola For Aligners

10% carbamide peroxide	1 x 2 hours / day to overnight
35% carbamide peroxide	1 x 15 minute applications or 1 x 30 minutes a day

Pola Light

Pola Day 9.5% hydrogen peroxide	2 x 10 minute treatments a day
Pola Night 22% carbamide peroxide	2 x 15 minute treatments a day



ON THE GO

Pola Luminate

6% hydrogen peroxide	2 x 30 minute applications per day
----------------------	------------------------------------



POLA OFFICE



IN-OFFICE TREATMENTS

Pola Office

Pola Office, with its 35% hydrogen peroxide formulation is designed to whiten teeth in less than 30 minutes.

Indications: Whitening of discolored vital and non-vital teeth.

Minimal chair time and built in desensitizer

With its neutral pH to protect your patient's teeth and gum, the unique formulation releases the active ingredients immediately to initiate the whitening treatment.

Pola Office is designed to protect sensitive dental nerves and nerve endings with Pola Desensitizing Technology (PDT) which ensures that the whitening only acts on teeth, minimizing irritation, burning, pain or long-term gum damage.

POLA RAPID STEP BY STEP GUIDE

1. Determine and record pre-operative shade using the Vita* shade guide.
2. Clean teeth with ONLY a flour-based pumice.
3. Place cheek retractors and then cover exposed lip surface with petroleum gel.
4. Dry teeth and apply Gingival Barrier to both arches, slightly overlapping enamel and interproximal spaces.
5. Light cure in a fanning motion for 10-20 seconds until Gingival Barrier is cured.
6. **Firmly** attach a mixing nozzle to the Pola Rapid syringe away from patient, and insert the plunger. Dispense a small amount of gel onto a mixing pad until a uniform blue gel is extruded.
7. Using the nozzle as a guide, directly apply a thin layer of gel to all teeth undergoing treatment. A thin layer will help prevent the gel from running.
8. Leave gel on for 8 minutes (Optional: A curing light may be used at this stage, Radii Xpert or Radii Plus (SDI Limited)).
9. Suction off using a surgical aspirator tip. Note: It is normal for a residue layer of gel to remain on the surface of the teeth.
10. Complete steps 7-9 three times (optional 4 times).
11. After the last application, suction all the gel off, then wash and apply suction.
12. Remove Gingival Barrier by lifting it from one end.
13. Record the final shade.



Image source: Dr Miles Cone, USA.

POLA RAPID

SUPER.
FAST.
WHITENING.



Scan QR code
for step by step
instructions.

Pola Rapid is the new in-office whitening treatment that safely whitens teeth in a 24 minute application time.

A unique 38% hydrogen peroxide formulation that releases active ingredients immediately.

In only one visit, Pola Rapid initiates a powerful whitening treatment designed to whiten teeth in 24 minutes.

Enhanced blue gel for faster application

Pola Rapid uses an advanced blue gel for ease of visibility and application. The easy to apply, non-stick gel enables faster application and removal.

Simple delivery and precise application

No mixing is required. The dual barrel syringe system mixes as the gel is applied directly onto the tooth. The supplied brush tip helps deliver a smoother and more precise application.

Built in desensitizers

Pola Rapid has unique built-in desensitizing properties that inhibit post-operative sensitivity. Potassium nitrate, the key pain reducing ingredient, prevents sensitivity to provide a calming effect. The high water content of Pola Rapid ensures maximum comfort during and after



treatment. The shorter treatment time results in less patient discomfort and lower sensitivity.

Fluoride releasing to strengthen teeth

Pola Rapid contains fluoride, helping to strengthen teeth and protect against sensitivity.

Can be used with or without a bleaching light

Pola Rapid can be used with or without a bleaching light, as it does not require heat to activate.



CLINICAL CASE STUDY



Dr. Miles Cone

Fellow
American College of Prosthodontists
Diplomate
American Board of Prosthodontics
Nuance Dental Specialist
Portland, Maine, USA

Pola Rapid 38%

"Pola Rapid has exceptional color saturation for enhanced visibility during intraoral application. The new non-stick bleaching gel stays where you apply it, and easily wipes away clean with no mess. I found the new system fast, reliable to use with minimal sensitivity for patients"



POLA
DAY

POLA
NIGHT

POLA
DAY CP

POLA
FOR ALIGNERS



AT HOME TREATMENTS

Fluoride releasing

Pola Day and Pola Night both contain fluoride, which helps strengthen the tooth to protect it against sensitivity.

Safe and convenient

Pola Day and Pola Night's unique high water content formulation has a neutral pH to protect gums and teeth during treatment.

Effective whitening

The desired whitening effect can be achieved in as little as 15 minutes or can be conveniently applied overnight while you sleep.

Pola Desensitizing Technology (PDT)

Pola Day and Pola Night contain PDT to assist with the prevention of post treatment sensitivity.

What's the difference between Pola Day and Pola Night?

Pola Day consists of a range of hydrogen peroxide based take home gels specifically designed for achieving whitening results for patients with limited time in their schedule.

Pola Night is a range of carbamide peroxide based take home gels that deliver optimum whitening results to patients who have more sensitive teeth.

Both ranges are available in a variety of different strengths with the lower concentrations geared towards more sensitive teeth.

Pola Day CP

Pola Day CP is the super-fast take home whitening gel which only to be worn just 15 minutes each day. It is designed for those people who need to jump start their tooth whitening in a short space of time.

Pola For Aligners

Pola whitening gel for aligners is perfectly formulated for use with orthodontic aligner trays. Pola For Aligners can easily be used in-office or as a take home kit, ensuring a great patient experience by providing whiter, brighter smiles with no additional wear time.

Available in Pola Night 10% and Pola Day CP 35% gel offering treatment flexibility for day or night wear.

POLA
LUMINATE

Recharge the brightness with Pola Luminate! With 6% hydrogen peroxide, Pola Luminate is our highest strength brush on tooth whitener. It is designed to easily fit into your patient's pocket or bag to be used on the go! This is a great touch up tool to maintain an already white smile.



STEP BY STEP GUIDE

1. Place a small drop of gel into every compartment of the tray for the teeth undergoing treatment.
2. Seat the tray, with the gel, around the teeth.
3. Wipe away excess gel in mouth with a tissue or dry soft brush.
4. After treatment, remove tray. Rinse tray and mouth with lukewarm water.
5. Brush teeth.



POLA LIGHT

A NEW ADVANCED TAKE HOME TOOTH WHITENING SYSTEM WITH LED LIGHT TECHNOLOGY



Enjoy a Brighter, more confident smile In 5 Days

Pola Light is an advanced tooth whitening system that combines Pola's award-winning whitening formula, with an LED mouthpiece, for a faster whitening treatment.

- The Pola Light system combines with Pola Day and Night gel.
- Fast acting, delivering whiter teeth in as little as 5 days.
- Formulated to safely remove long term stains.
- Fully rechargeable for future tooth whitening treatments.
- Remineralization to strengthen the teeth.
- Extra hydration to minimize sensitivity.



FROM JUST
20 MINUTES
A DAY

2 x 10 or 2 x 15 minute
treatments a day.



EASY TO USE

Portable, rechargeable and easy to wear with no cord attached to mouthpiece.

Pola LED mouthpiece is a dual arch and a universal size.



WHITER
TEETH IN
FIVE DAYS

5 day treatment time.
No chair time or custom trays
required, saving time for both
patient and dentist.



PROFESSIONALLY
USED AND
RECOMMENDED

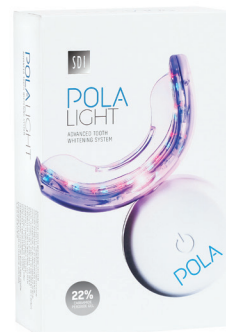
Pola is a professional tooth whitening system that is trusted and recommended by dentists to achieve a safer, quicker and whiter smile.

The high viscosity, neutral pH tooth whitening gels ensure the greatest patient comfort in a take home kit.

The unique blend of soothers, conditioners and high water content assist in reducing sensitivity.

POLA LIGHT PACKAGING

- 1 x Pola LED mouthpiece
- 4 x 3g tooth whitening syringes
Pola Day 9.5% hydrogen peroxide or
Pola Night 22% carbamide peroxide
- 1 x USB charging cord
- 1 x Instruction guide



POLA WHITENING STAND

SIMPLE DESIGN

The Pola Whitening Stand comes in a smart and slimline design that supports both Radian Plus and Radian Xpert curing lights.

WIDE RANGE OF MOVEMENTS AND ADJUSTMENTS

The Pola Whitening Stand has five rotation points, allowing you to adjust the stand up to 360° to achieve the exact position you require.

VERSATILE

The stand can be positioned beside or behind the patient, depending on the practice requirements.

EQUIPPED WITH WHEELS

The stand is equipped with wheels allowing complete freedom of movement and control from room to room.

LIGHTWEIGHT, CORDLESS AND COMPACT

Moving and positioning the stand is simple due to the lightweight and cordless design.

The compact stand is easy to clean and can easily be stored away when not in use.

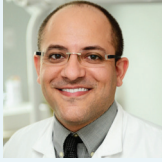
STABILITY OF THE SYSTEM

The stand brakes ensure the base remains steadily in place while in use.



Scan QR code
for assembly
instructions.

CLINICAL CASE STUDIES



Prof. Leandro Martins

POLA NIGHT

Pola Night 10%

One of the biggest problems of dental whitening is tooth sensitivity. Therefore, finding products that bring greater safety is the key. With low concentration carbamide peroxide, Pola Night bleach has high water content, neutral pH, desensitizers and high viscosity. These characteristics responds to the patient's demand for an effective result with protection against sensitivity and gingival irritation. Therefore, the choice for Pola Night 10% is due to its characteristics of a convenient, safe and effective product.



Dr Linda Greenwall
BDS MGDS RCS MSc MRD
RCS FFGDP FICD BEM
Prosthodontist and Specialist
in Restorative Dentistry
UK

Pola Night 10% CP for Aligners

Pola Night 10% CP for Aligners has been used for 6 weeks with clear orthodontic aligners.



POLA IN-OFFICE

Pola Rapid 3 patient kit

7700500 Pola Rapid 3 Pat Kt
7700501 Pola Rapid
3 Pat Op Gate Kt
3 x 2.8 mL syringes of Pola Rapid
3 x 1g Gingival Barrier syringe
Accessories



Pola Rapid 1 patient kit

7700502 Pola Rapid 1 Pat Kt
7700503 Pola Rapid
1 Pat Op Gate Kt
1 x 2.8 mL syringe of Pola Rapid
1 x 1g Gingival Barrier syringe
Accessories



Pola Whitening Stand

7700989
1 x Stand
1 x mount for SDI Radii Plus
1 x mount for SDI Radii Xpert
Accessories



Pola Office 3 Patient Kit

7700015
6 X 0.3g Pola Office Powder Pots
6 X 2mL Pola Office Syringes
3 X 1g Gingival Barrier Syringes
Accessories



Pola Office 1 Patient Kit

7700030
2 X 0.3g Pola Office Powder Pots
2 X 2mL Pola Office Syringes
1 X 1g Gingival Barrier Syringe
Accessories



Gingival barrier 2 Syringe Refill

7750006
2 X 1g Gingival Barrier Syringes
Accessories



POLA AT HOME

Pola Day and Pola Night 10 x 1.3g Syringe Kits

7700103 (7.5% HP)
7700105 (9.5% HP)
7700107 (10% CP)
7700109 (16% CP)
7700111 (22% CP)



Pola Day and Pola Night 4 x 1.3g Mini Kits

7700102 (7.5% HP)
7700104 (9.5% HP)
7700106 (10% CP)
7700108 (16% CP)
7700110 (22% CP)
7700324 (35% CP)



Pola Day and Pola Night 50 x 3g Dispenser Kit

7700070 (7.5% HP)
7700071 (9.5% HP)
7700072 (16% CP)
7700080 (22% CP)
7700073 (35% CP)



Pola Day and Pola Night 50 x 1.3g Bulk Kit

7700026 (7.5% HP)
7700034 (9.5% HP)
7700027 (10% CP)
7700028 (16% CP)
7700029 (22% CP)
7700325 (35% CP)



Pola Day and Pola Night 36 x 3g Value Packs

7700061 (9.5% HP)
7700062 (16% CP)



Soothe

8150002
4 X 1.2mL Soothe Syringes
8150034
50 X 1.2mL Soothe Syringes



Pola For Aligners Pola Night and Pola Day CP

4 x 1.3g syringes 7700552 (10% CP)
4 x 1.3g syringes 7700553 (35% CP)
4 x 3g syringes 770550 (10% CP)



Pola Light

7700983 (9.5% HP)
7700984 (22% CP)



Please note: each pack includes accessories.

CP: Carbamide Peroxide **HP:** Hydrogen Peroxide

POLA ON THE GO

Pola Luminate

7700092
1 X 5.5mL Pola Luminate



Spacer Resin 2 Syringe Refill

7700012
2 X 1g Spacer
Resin Syringes

Tray Cases: 5 Pack

7750008
5 Tray Cases

Cosmetic Pola Pouches: 10 Pack

7700999
10 Pouches

Tray Material: 20 Pieces

7750005
20 Piece Refill

^Optragate® is not a registered trademark of SDI

FREE MARKETING MATERIAL

MARKETING MATERIAL TO ASSIST IN PROMOTING WHITENING TO PATIENTS.



POSTER POLA DAY
Reorder M100274



POSTER POLA NIGHT
Reorder M100275



POSTER POLA RAPID
Reorder M100568



POSTER POLA RAPID
Reorder M100569



POSTER POLA LIGHT
Reorder M100486



POLA LIGHT COUNTER
CARD
Reorder M100496



POLA BEFORE &
AFTER STAND
Reorder M100288



POLA PATIENT
HANDOUT STAND
Reorder M100290



POLA LIGHT DENTIST
HANDOUT
Reorder M100509



POLA LIGHT PATIENT
HANDOUT
Reorder M100510



POLA STATEMENT STUFFER
Reorder M100291



POLA THANK YOU CARD
Reorder M100295



POLA PATIENT HANDOUTS
Reorder M100367



POLA MENU
Reorder M100645



POLA APPOINTMENT
CARDS
Reorder M100287



POLA CEILING TILE
Reorder M100293



POLA WINDOW
STICKER
Reorder M100289



POLA CARRY BAG
Reorder M100143



POLA WAITING ROOM
USB VIDEO
Reorder M100245



CUSTOMIZABLE MARKETING MATERIAL
More customizable marketing material is available via download.
Visit www.sdi.com.au

SDI LIMITED IS PRIMARILY
INVOLVED IN THE RESEARCH
AND DEVELOPMENT,
MANUFACTURING AND
MARKETING OF SPECIALIST
DENTAL MATERIALS.
SDI'S PRODUCTS ARE A
COMBINATION OF INNOVATION
AND EXCELLENCE TO PROVIDE
THE IDEAL RESTORATIVE
MATERIALS FOR THE DENTAL
PROFESSION.



MADE IN AUSTRALIA
by SDI Limited
3-15 Brunsdon Street,
Bayswater, Victoria 3153 Australia
www.sdi.com.au

AUSTRALIA 1 800 337 003
AUSTRIA 00800 022 55 734
BRAZIL 0800 770 1735
FRANCE 00800 022 55 734
GERMANY 0800 100 5759
ITALY 00800 022 55 734
SPAIN 00800 022 55 734
UNITED KINGDOM 00800 022 55 734
USA & CANADA 1 800 228 5166



INSTAGRAM
@pola_smile



FACEBOOK
polasmiletoothwhitening

FOR MORE INFORMATION VISIT
polawhite.com.au

