

SDI | LUNA FLOW

UNIVERSAL FLOWABLE COMPOSITE



PERFECT FLOW
PERFECT STAY



CELEBRATING THE 50TH ANNIVERSARY OF SDI



LUNA FLOW

Luna Flow is a new extra strong flowable composite that is available in two viscosities.

With a blend of fillers in different ultrafine sizes to optimize handling, mechanical and optical properties, Luna Flow offers high radiopacity, control over the application, easy and accurate shade matching with colour stability, excellent strength and wear resistance.

Such properties make Luna Flow a fantastic universal option for liner; base; provisional or restoration repairing; and Class V; amongst other indications.

» "Amazing product! It is so easy to apply. Luna Flow is perfect, especially the low viscosity. I love it." «

🇨🇦 DR GERARD MELKI - CANADA



» "Luna Flow reflects SDI's successful efforts in improving dental materials." «

🇪🇸 DR MARIO GONZALEZ BONILLA - SPAIN



» "SDI products make daily practice faster and more profitable, allowing dentists to save working time and obtain great results. SDI composites have excellent handling, fantastic finish and natural shine." «

🇧🇷 PROF DR MARCO AURELIO CHAVES - BRAZIL



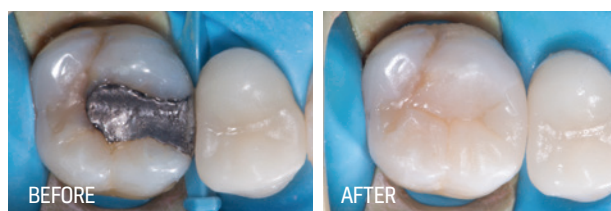
RESTORATIONS WITH LUNA FLOW COMBINED WITH LUNA 2



🇨🇦 Images courtesy of Dr Fay Goldstep & George Freedman - Canada



🇪🇸 Images courtesy of Dr Jose Amengual Lorenzo - Spain



🇦🇺 Images courtesy of Dr Bill Gergis, Founder of Biomimetic Aesthetic Dentistry - Australia

FLOWS AND STAYS PERFECTLY

Luna Flow is available in two viscosities to suit your clinical needs.

Use Luna Flow for superior handling and maximum control during application. This beautiful composite flows on demand, holds its shape and does not string.

For clinicians who prefer more flow, use Luna Flow LV - a low viscosity option.



RESTORATION WITH LUNA FLOW

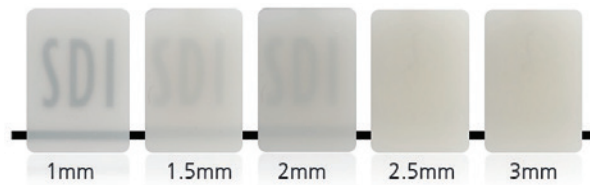


🇨🇦 Images courtesy of Dr Carla Cohn, Canada

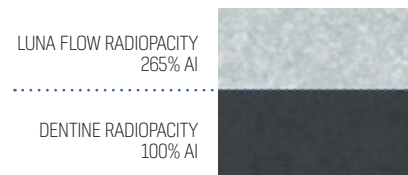
NATURAL TOOTH-LIKE PROPERTIES ACROSS ALL LIGHT

Using the Logical Shade Matching Technology with chameleon effect, Luna Flow shades were developed prioritising value (lightness), while pigments were arranged in a logically increasing way, for a simpler and faster match to the Vita Classical Shade Guide®.

The Luna Flow Chameleon Effect and the innovative Shade Matching Technology mimics the natural properties of teeth across all light sources. Your patients will enjoy lifelike translucency, opalescence, and fluorescence.



Translucency in different thicknesses of Luna Flow shade A2



Source: Internal test data

HIGH COMPRESSIVE STRENGTH 421 MPa

Luna Flow offers an exceptionally high compressive strength of 421 MPa. As most mastication forces are compressive in nature, Luna Flow is well suited for use in posterior restorations to support the occlusal loads.

HIGH FLEXURAL STRENGTH 128 MPa

Luna Flow withstands masticatory forces in a similar way to dentine. Luna Flow is ideal for Class V cavities, where flexibility is important to ensure longevity of the restoration and satisfaction of the patient.

OUTSTANDING RADIOPACITY 265% AI

Luna Flow has impressive radiopacity [265%], providing a significant contrast to natural dentine/enamel [100%/170%]. This contrast aids faster and more precise diagnosis

RESTORATIONS WITH LUNA FLOW COMBINED WITH LUNA 2



 Images courtesy Dr Teo Vaca - Spain

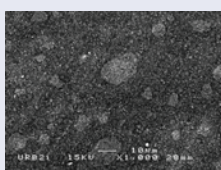
» "Shade matching and handling of Luna Flow are outstanding. Restorations are seamless." «

 DR FERNANDA ZEVIANI - AUSTRALIA

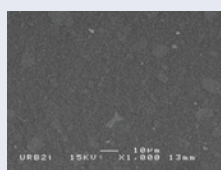


POLISHING FOR PERFECTION

The Luna Flow filler formulation is primed for excellent polishing results, wear resistance and longevity.







SEM before finishing and polishing



SEM after finishing and polishing

INSTRUCTIONS

-  Etch tooth surface with Super Etch 37% phosphoric acid for 10 seconds
-  Wash thoroughly, remove excess water and keep moist
-  Apply Zipbond Universal according to instructions, blow gently for 5 seconds and light-cure for 10 seconds
-  Place Luna Flow in increments of 2mm or less, light-cure for 20 seconds, finish and polish

SOURCE: Independently tested by Unité de Recherches Biomatériaux Innovants et Interfaces (URB2I-EA 4462 Paris Descartes). Chairman: Dr Jean-Pierre Attal.

ORDER DETAILS



LUNA FLOW INTRO KIT SYRINGES

| | |
|--|---------|
| 20 x disposable tips 20 gauge (1 bag of 20) | 8566125 |
| 2 x LUNA FLOW syringe A2 | |
| 2 x LUNA FLOW syringe A3 | |



LUNA FLOW SYRINGE 4G REFILLS

| | |
|--|---------|
| LUNA FLOW Syr A1 - Vita® | 8566101 |
| LUNA FLOW Syr A2 - Vita® | 8566102 |
| LUNA FLOW Syr A3 - Vita® | 8566103 |
| LUNA FLOW Syr A3.5 - Vita® | 8566104 |
| LUNA FLOW Syr B1 - Vita® | 8566106 |
| LUNA FLOW Syr B2 - Vita® | 8566107 |
| LUNA FLOW Syr C2 - Vita® | 8566110 |
| LUNA FLOW Syr Opaque OA2: opaquer with A2 shade | 8566115 |
| LUNA FLOW Syr Opaque OA3: opaquer with A3 shade | 8566116 |
| LUNA FLOW Syr I - Incisal: more translucent, equivalent to enamel | 8566118 |
| LUNA FLOW Syr XB - Extra Bleach shade: equivalent to OM2 Vita® | 8566121 |
| LUNA FLOW Syr 2XB - 2x Extra Bleach shade: equivalent to OM1 Vita® | 8566122 |



LUNA FLOW COMPLET REFILLS [0.25G X 20 REFILLS; 5G TOTAL]

| | |
|---|---------|
| LUNA FLOW Comp A1 - Vita® | 8566151 |
| LUNA FLOW Comp A2 - Vita® | 8566152 |
| LUNA FLOW Comp A3 - Vita® | 8566153 |
| LUNA FLOW Comp A3.5 - Vita® | 8566154 |
| LUNA FLOW Comp B1 - Vita® | 8566156 |
| LUNA FLOW Comp B2 - Vita® | 8566157 |
| LUNA FLOW Comp C2 - Vita® | 8566160 |
| LUNA FLOW Comp Opaque OA2: opaquer with A2 shade | 8566165 |
| LUNA FLOW Comp Opaque OA3: opaquer with A3 shade | 8566166 |
| LUNA FLOW Comp I - Incisal: more translucent, equivalent to enamel | 8566168 |
| LUNA FLOW Comp XB - Extra Bleach shade: equivalent to OM2 Vita® | 8566171 |
| LUNA FLOW Comp 2XB - 2x Extra Bleach shade: equivalent to OM1 Vita® | 8566172 |



LUNA FLOW LV INTRO KIT SYRINGES

| | |
|--|---------|
| 20 x disposable tips 20 gauge (1 bag of 20) | 8566225 |
| 2 x LUNA FLOW LV syringe A2 | |
| 2 x LUNA FLOW LV syringe A3 | |



LUNA FLOW LV SYRINGE A2 REFILLS

| | |
|---|---------|
| LUNA FLOW LV Syr A1 - Vita® | 8566201 |
| LUNA FLOW LV Syr A2 - Vita® | 8566202 |
| LUNA FLOW LV Syr A3 - Vita® | 8566203 |
| LUNA FLOW LV Syr A3.5 - Vita® | 8566204 |
| LUNA FLOW LV Syr B1 - Vita® | 8566206 |
| LUNA FLOW LV Syr B2 - Vita® | 8566207 |
| LUNA FLOW LV Syr C2 - Vita® | 8566210 |
| LUNA FLOW LV Syr Opaque OA2: opaquer with A2 shade | 8566215 |
| LUNA FLOW LV Syr Opaque OA3: opaquer with A3 shade | 8566216 |
| LUNA FLOW LV Syr I - Incisal: more translucent, equivalent to enamel | 8566218 |
| LUNA FLOW LV Syr XB - Extra Bleach shade: equivalent to OM2 Vita® | 8566221 |
| LUNA FLOW LV Syr 2XB - 2x Extra Bleach shade: equivalent to OM1 Vita® | 8566222 |



LUNA FLOW LV COMPLET REFILLS [0.25G X 20 REFILLS; 5G TOTAL]

| | |
|--|---------|
| LUNA FLOW LV Comp A1 - Vita® | 8566251 |
| LUNA FLOW LV Comp A2 - Vita® | 8566252 |
| LUNA FLOW LV Comp A3 - Vita® | 8566253 |
| LUNA FLOW LV Comp A3.5 - Vita® | 8566254 |
| LUNA FLOW LV Comp B1 - Vita® | 8566256 |
| LUNA FLOW LV Comp B2 - Vita® | 8566257 |
| LUNA FLOW LV Comp C2 - Vita® | 8566260 |
| LUNA FLOW LV Comp Opaque OA2: opaquer with A2 shade | 8566265 |
| LUNA FLOW LV Comp Opaque OA3: opaquer with A3 shade | 8566266 |
| LUNA FLOW LV Comp I - Incisal: more translucent, equivalent to enamel | 8566268 |
| LUNA FLOW LV Comp XB - Extra Bleach shade: equivalent to OM2 Vita® | 8566271 |
| LUNA FLOW LV Comp 2XB - 2x Extra Bleach shade: equivalent to OM1 Vita® | 8566272 |

LUNA FLOW BULK KITS SYRINGES

| | |
|---|---------|
| 5 x 2g syringe LUNA FLOW 20 x applicator tips (1 bags of 20) | |
| LUNA FLOW BULK KIT A1 Equivalent to Vita® A1 | 8566130 |
| LUNA FLOW BULK KIT A2 Equivalent to Vita® A2 | 8566131 |
| LUNA FLOW BULK KIT A3 Equivalent to Vita® A3 | 8566132 |

LUNA FLOW LV BULK KITS SYRINGES

| | |
|--|---------|
| 5 x 2g syringe LUNA FLOW LV 20 x applicator tips (1 bags of 20) | |
| LUNA FLOW LV BULK KIT A1 Equivalent to Vita® A1 | 8566230 |
| LUNA FLOW LV BULK KIT A2 Equivalent to Vita® A2 | 8566231 |
| LUNA FLOW LV BULK KIT A3 Equivalent to Vita® A3 | 8566232 |



APPLICATORS

| | |
|----------------------------|---------|
| Premium Complet Applicator | 5545022 |
|----------------------------|---------|

CLINICAL TIP: XB and 2XB Bleach shades are excellent for use in restorations after tooth whitening treatment with Pola (SDI Limited), and also on milky white teeth.



CLINICAL TIP: LUNA FLOW can be used with Zipbond Universal (SDI Limited) - a single component fluoride-releasing universal adhesive, with excellent handling and desensitizing effect.



VIEW A LUNA FLOW RESTORATION

Scan the QR code below



YOUR OUR
SMILE. VISION.



MADE IN AUSTRALIA
by SDI Limited
Bayswater, Victoria 3153
Australia
www.sdi.com.au

AUSTRALIA 1800 337 003
AUSTRIA 00800 0225 5734
BRAZIL 0800 770 1735
FRANCE 00800 0225 5734
GERMANY 0800 100 5759

ITALY 00800 0225 5734
NEW ZEALAND 0800 808 855
SPAIN 00800 0225 5734
UNITED KINGDOM 00800 0225 5734
USA & CANADA 1 800 228 5166