

A quick and simple technique to aesthetically restore an anterior tooth with severe Molar-Incisor Hypomineralisation (MIH)



BY DR.
PATRICK
ROUAS
(FRANCE)

CASE STUDY

Lola is a 14 years old patient who wanted to improve her smile. Her upper left central is severely affected by molar-incisor-hypomineralisation (MIH). Affected tooth has an unsightly stain which affected her self-esteem when she smiled (Fig 1). There was also some slight loss of enamel structure on the labial surface.

The first treatment consideration was to use resin infiltration, Icon (DMG) to address this lesion but because the hypomineralisation was too deep this technique was deemed ineffective. The most ideal approach was to use macro-abrasion followed by a thin layer of composite material especially designed to replace loss tooth structure.

DIAGNOSIS & TREATMENT

Upper left central with MIH. (Fig 1)

Micro-abrasion was achieved with ultrasonic abrasion. (Fig 2)

Tooth was etched with phosphoric acid for 20 seconds and then rinse with copious amounts of water. (Fig 3)

Riva Bond LC (SDI Ltd.) bonding agent was applied according to manufacturer's instructions. (Fig 4)



Fig 1. Upper left central with MIH.



Fig 3. Tooth was etched with phosphoric acid for 20 seconds and then rinse.

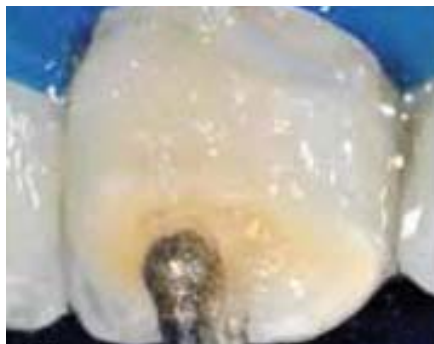


Fig 2. Ultrasonic abrasion.

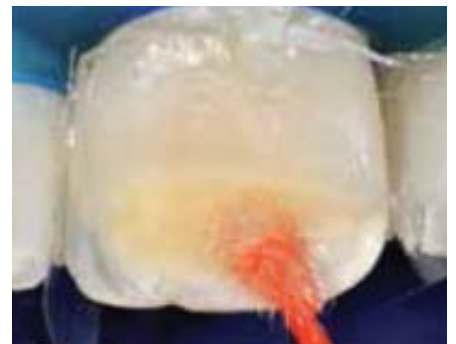


Fig 4. Riva Bond LC (SDI Ltd.) bonding agent was applied.

aura a simple, easy, beautiful SMILE

DIAGNOSIS & TREATMENT

An opaquer was applied using a brush and cured. **(Fig 5)**

The lost enamel was replaced with Aura (SDI Ltd.) shades E1 and E2 and cured. **(Fig 6)**

The restoration was polished using coarse then fine polishing discs. Polishing pastes were then used with a brush to achieve a high gloss finish. **(Fig 7)**

The rubber dam was removed and excellent result was approved by both the patient and her parents. **(Fig 8)**



Fig 5. An opaquer was applied using a brush and cured.



Fig 7. The restoration was polished using coarse then fine polishing discs.



Fig 6. Lost enamel was replaced with Aura (SDI Ltd.) shades E1, E2 and cured.



Fig 8. The rubber dam was removed and excellent result was approved.

