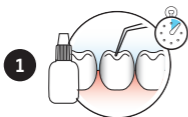


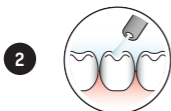
**SDI**

# RIVA SELF CURE/HV

**1**

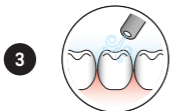
Isolate tooth, prepare cavity.  
**OPTIONAL:** Apply Riva Conditioner for 10 seconds, wash and remove excess water.

---

**2**

Wash thoroughly.

---

**3**

Remove excess water.  
Keep moist.

---

**4**

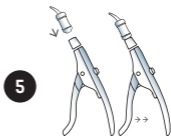
Activate the capsule and immediately mix in a triturator for 10 seconds. Do not click before you mix.

---



Press capsule down to click.  
Ten seconds in a triturator.

---

**5**

Immediately place into capsule applicator and click trigger until paste is seen through the nozzle.

---

**6**

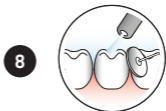
Extrude Riva Self Cure into cavity and contour. Light cure each increment for 10 seconds.

---

**7**

Apply Riva Coat and light cure for 10 seconds.

---

**8**

Commence final finishing under water spray.

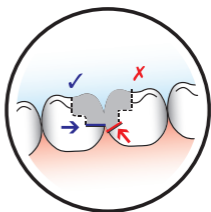
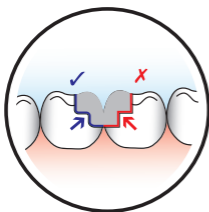
---

**9**

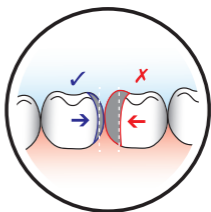
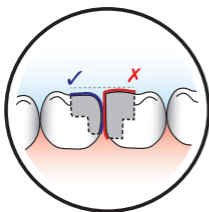
Apply Riva Coat and light cure for 10 seconds.

---

- 1 Rounded internal angles and horizontal gingival wall.



- 2 No over contours.



- 2 Rounded external contour, from 1 to 1.5mm away from cusp peaks.

