

riva protect

GLASS IONOMER FISSURE AND TOOTH PROTECTOR

IONOMERO DE VIDRIO PROTECTOR DE DIENTES Y FISURAS

IONÔMERO DE VIDRO PARA FISSURAS E PROTETOR DENTAL

SZKŁO-JONOMEROWY MATERIAŁ O DZIAŁANIU OCHRONNYM

GLASIONOMER FISSUREN UND ZAHN PROTECTOR

VERNIS PROTECTEUR POUR DENTS ET CIMENT VERRE IONOMÈRE

VETRO-IONOMERO PER LA PROTEZIONE DEI DENTI E DELLE FESSURE

GLASIONOMEER FISSUUR AND TAND PROTECTOR

GLASJONOMER FISSUR-OCH TANDSKYDD

GLASIONOMER FISSUR OG TAND BESKYTTER

LASI-IONOMEERI PINNOITEAINE

GLASIONOMER FISSUR OG TAND BESKYTTER

ΥΑΛΟΙΟΝΟΜΕΡΕΣ ΠΡΟΣΤΑΤΕΥΤΙΚΟ ΣΧΙΣΜΩΝ ΚΑΙ ΔΟΝΤΙΟΥ

CAM İONOMER FİSSÜR ÖRTÜCÜ VE DIŞ KORUYUCU

SKLOIONOMERNÍ OCHRANA FISUR A ZUBU

IONOMER DE STICLA AUTOPOLIMERIZABIL PENTRU SIGILARI
SANTURI SI FOSETE

ГЛАС ЙОНОМЕРЕН ФИСУРЕН И ЗЪБЕН ПРОТЕКТОР

SKLOIONOMERNÁ OCHRANA FISÚR A ZUBOV

ÜVEGIONOMER BARÁZDA ÉS FOGZOMÁNCVÉDO

STAKLENI IONOMER ZA ZAŠTITU ZUBI I FISURA

玻璃离子窝沟和牙齿保护剂



SDI

the ultimate glass ionomer surface protector, sealant and liner



riva protect



Proprietary ionglass[™] filler technology

Riva Protect utilises SDI's proprietary *ionglass*[™] filler developed by our glass technologists. *ionglass*[™] is a radiopaque, high ion releasing, reactive glass used in SDI's range of dental cements. Riva Protect releases substantially higher fluoride to assist with remineralisation of the natural dentition.

Remineraliser

The unique nanotechnology filler additive in Riva Protect, ACP (Amorphous Calcium Phosphate [$Ca_3(PO_4)_2$]) further enhances remineralisation.

ACP Technology

ACP (amorphous calcium phosphate) is a nanoparticle filler additive that can be easily absorbed by the tooth structure. ACP supercharges the natural remineralisation effects of glass ionomer cements. ACP is made from the same materials as natural tooth enamel, but is in a form that makes it easy to be absorbed. ACP adds extra calcium and phosphate to the tooth interface, which combines with fluoride from the glass in Riva Protect to reform the natural tooth structure!

Before

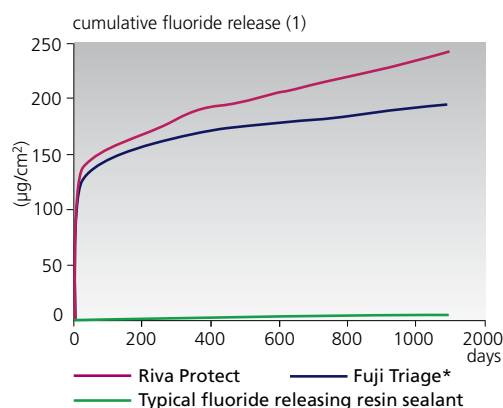


Pink shade shown

After



White shade shown. Photos courtesy of Dr Geoff Knight.



Perfect for caries-challenged patients

Riva Protect is the ideal product for caries-challenged patients – it adheres directly to the tooth, strengthens the underlying tooth structure and effectively seals the tooth from harmful bacteria and acids.

Great protector for partially erupted teeth

Riva Protect immediately guards the pits, fissures and tooth surfaces of partially erupted teeth from caries development. These teeth are the most vulnerable and moisture control can be difficult.

Low viscosity

The ideal low viscosity allows Riva Protect to quickly flow over surfaces and penetrate deeply into pits and fissures. A recognised cause of pit and fissure sealant failure is an inability to seal. The tight seal and self adhesive nature of Riva Protect optimises retention and eliminates the space required for bacteria to grow.

Pink White



Flow at 90° angle for 1 minute.

Self adhesive

Like all glass ionomer cements, Riva Protect chemically bonds to the tooth surface without the need of an adhesive.

Moisture tolerant

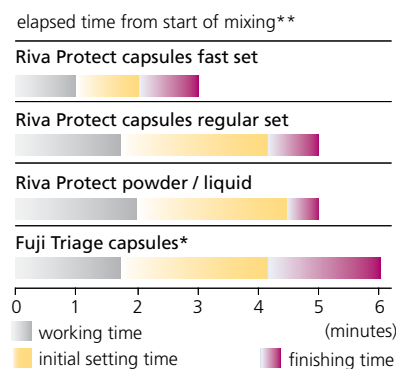
Riva Protect can be placed in a moist or dry environment. Unlike when using resin sealants, moisture control is not an issue.

Pink or white

Riva Protect is available in pink or white shades. Some clinicians prefer a white shade for a more natural looking restoration. Others prefer to be able to identify the material easily after the restoration has been placed.

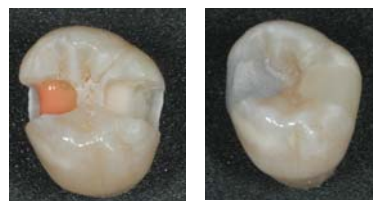
Choice of setting times

The capsules are available in regular or fast setting times. The powder / liquid sets are available in regular set.



Special indications

With its superb fluoride releasing and remineralisation abilities, Riva Protect is fabulous for use as a liner. For orthodontists, this is a great material for bite openings.



Riva Protect pink and white shades used as a liner under amalgam and composite respectively.

Indications

- Pit and fissure sealing
- Root / tooth surface protection
- Hypersensitivity prevention
- Temporary fillings
- Temporary endodontic fillings
- Lining
- Bite openings (for orthodontists)

Instructions:

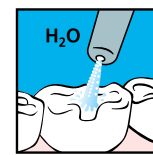
pit and fissure sealing

Clean and isolate tooth

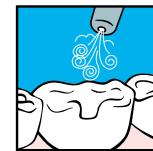
- 1 Apply Riva Conditioner for 10 seconds **or** Super Etch 37% Phosphoric Acid for 5 seconds



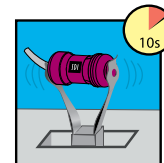
- 2 Wash thoroughly



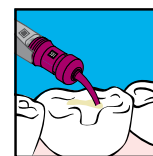
- 3 Remove excess water. Keep moist



- 4 Mix the capsule in an amalgamator **OR** mix the powder/liquid combination on a mixing pad



- 5 Apply Riva Protect to tooth surface



- 6 Spread the material onto tooth surface



- 7 When the material has lost its surface gloss, apply a thin film of Riva Coat

- 8 Light cure for 10 seconds

- 9 Final finishing under water spray using standard techniques can begin approximately 3 minutes for fast set (5 minutes for regular set) after start of mixing

riva protect



Riva Protect Capsules Regular set

50 x Riva Protect Pink capsules
Reorder 8680000 (Pink)
Reorder 8690000 (White)

Riva Protect Capsules Fast Set

50 x Riva Protect Pink capsules
Reorder 8685000 (Pink)
Reorder 8695000 (White)

Riva Protect Powder/Liquid kit

1 x Riva Protect 15g Powder bottle
1 x Riva Protect 10g (9.1mL) Liquid bottle
1 x Riva Conditioner 10mL bottle
accessories
Reorder 8680501 (Pink)
Reorder 8690501 (White)

Riva Protect Powder Refill

1 x Riva Protect 15g Powder bottle
Reorder 8680101 (Pink)
Reorder 8690101 (White)

Riva Protect Liquid Refill

1 x Riva Protect 10g (9.1mL) Liquid bottle
Reorder 8680900



Riva Coat
5mL bottle refill
Reorder 8610001

Riva Conditioner
10mL bottle refill
Reorder 8620001



Riva Applicator 2
Reorder 5545013



Riva Applicator
Reorder 5545009

* Fuji Triage is not the registered trade mark of SDI Limited.

** Published and SDI Test Data.

(1) McCabe JF, Al-Naimi OT. Fluoride release of three Riva GI Products Compared with that of a competitor product (Third year report). University of Newcastle (UK); June 2008. NOTE: "Typical fluoride releasing resin sealant" value is SDI Test Data.



Made in Australia by SDI Limited
Bayswater, Victoria 3153
Australia 1 800 337 003
Austria 00800 022 55734
Brazil 0800 770 1735
France 00800 022 55 734
Germany 0800 100 5759
Ireland 01 886 9577
Italy 800 780625
New Zealand 0800 734 034
Spain 00800 022 55 734
United Kingdom 00800 022 55 734
USA & Canada 1 800 228 5166
www.sdi.com.au

